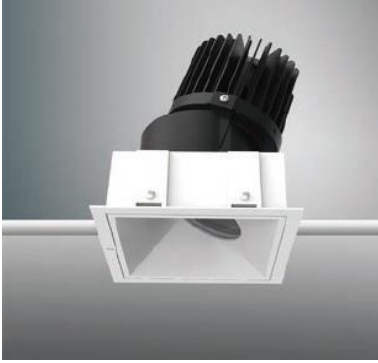


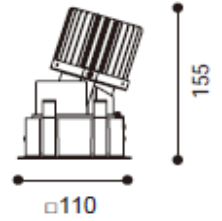
## AMAFI-110



## Product specification

**INTERIOR RECESSED DOWN LIGHT**

|              |  |
|--------------|--|
| Installation | Ceiling recessed                           |
| Cut out      | <input type="checkbox"/> 102mm             |
| Dimension    | D= <input type="checkbox"/> 110 x H= 155mm |

**Technical description**

|                       |  |        |        |
|-----------------------|--|--------|--------|
| Article number        | 1718.194   |        |        |
| LED Consumption       | 25.5W  |        |        |
| Current               | 700mA  |        |        |
| CCT                   | 2700K  | 3000K  | 4000K  |
| Lumen <sup>*1</sup>   | 2565lm   | 2670lm | 2712lm |
| Øsystem <sup>*3</sup> | -  | -      | -      |
| Voltage               | 36.5V  |        |        |
| Reflector             | 15°/25°/38°(lens)  |        |        |
| CRI                   | 90+  |        |        |
| Driver                | Remoted, I/P : 90-264V 50/60HZ<br>O/P : 15-50V 700mA 35w Max |        |        |

**Technical character**

|                       |                     |
|-----------------------|---------------------|
| Insulation            | CLASS III           |
| Protection            | IP 20               |
| Tilt                  | 0°-17°              |
| Rotate                | 0°-355°             |
| Operating temperature | -20~40 °C           |
| Average Failure Time  | L70(10k) >60000 (h) |

**Materials**

|                          |                                       |
|--------------------------|---------------------------------------|
| Luminaire                | aluminum die cast<br>temperated glass |
| Reflector                | lens                                  |
| Heat sink                | forged aluminum                       |
| Color available (Bezel)  | white / black                         |
| Color available (Baffle) | white / black / matt chrome           |

**Package**

|           |                  |
|-----------|------------------|
| inner box | mm 1 kg          |
| outer box | mm 0 kg / 0 in 1 |

**Photometric****Accessories**

None

**Remarks**

\*1. LUMEN : for LED chip test result based on Tc=85°C.

This is the ideal (Maximum) lumen. This lumen information is from the LED supplier

\*3. LUMEN(Øsystem) (Total FLUX) : this lumen is from luminaire with heat sink, reflector and fixture, this is the real lumen with the loss because of different design of reflectors and fixtures.

