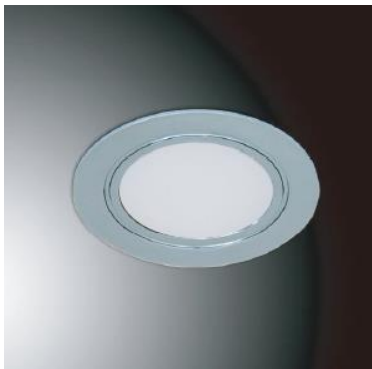


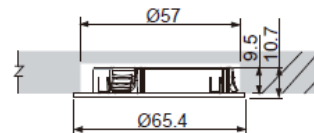
## AKIS-R-II



## Product specification

**INTERIOR LED CABINET LIGHT**

<b>Installation</b>	Ceiling recessed
<b>Cut out</b>	Ø57mm
<b>Dimension</b>	D=Ø65.4 x H= 10.7mm

**Technical description**

<b>Article number</b>	1468.106.3BTA
<b>LED Consumption</b>	1.7W
<b>Current</b>	-
<b>Lumen <sup>*1</sup></b>	100lm
<b>Øsystem <sup>*3</sup></b>	-
<b>Voltage</b>	12Vdc
<b>Reflector</b>	-
<b>CCT</b>	3000K
<b>CRI</b>	80+
<b>Driver</b>	Remoted, I/P : O/P:

**Technical character**

<b>Insulation</b>	CLASS III
<b>Protection</b>	IP 20
<b>Tilt</b>	-
<b>Rotate</b>	-
<b>Operating temperature</b>	0~35 °C
<b>Average Failure Time</b>	L70(6k) >36000 (h)

**Materials**

<b>Luminaire</b>	plastic fitting and optic lens
<b>Reflector</b>	-
<b>Heat sink</b>	-
<b>Color available</b>	white / black / chrome / gold / matt chrome / satin

**Package**

<b>inner box</b>	mm 1 kg
<b>outer box</b>	mm 0 kg / 0 in 1

**Photometric****Accessories****Remarks**

\*1. LUMEN : for LED chip test result based on Tc=85°C.

This is the ideal (Maximum) lumen. This lumen information is from the LED supplier

\*3. LUMEN(Øsystem) (Total FLUX) : this lumen is from luminaire with heat sink, reflector and fixture, this is the real lumen with the loss because of different design of reflectors and fixtures.