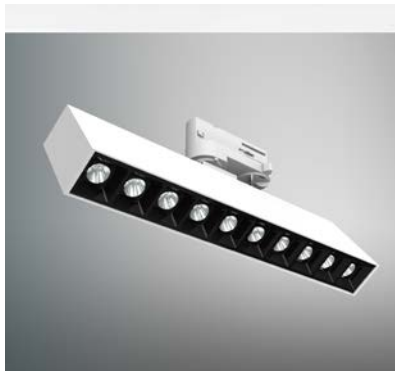


KANO



Product specification

INTERIOR TRACK LIGHT	
Installation	Track light
Cut out	-
Dimension	271x34x H=140mm

Technical description	
Article number	1819.235-10
LED Consumption	2.2W x10
Current	700mA
CCT	3000K
Lumen ^{*1}	200lm x10
Øsystem^{*3}	-
Voltage	-
Reflector	15°/30°/40°
CRI	90+
Driver	Remoted, I/P : 90-264V 50/60HZ O/P : 9-24V 700mA Max16w

Technical character	
Insulation	CLASS I
Protection	IP 20
Tilt	0-60°
Rotate	0-355°
Operating temperature	-20~40 °C
Average Failure Time	L70(6k) >36000 (h)

Materials	
Luminaire	steel
Reflector	pc
Heat sink	extruded aluminum
Color available-Bezel	white
Color available-Baffle	black/white/piano black

Package

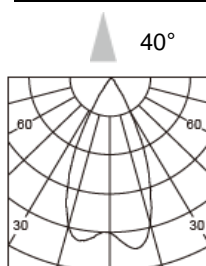
inner box	mm 1 kg
outer box	mm 0 kg / 0 in 1

Accessories

None

Remarks

Photometric



*1. LUMEN : for LED chip test result based on Tc=85°C.

This is the ideal (Maximum) lumen. This lumen information is from the LED supplier

*3. LUMEN(Øsystem) (Total FLUX) : this lumen is from luminaire with heat sink, reflector and fixture, this is the real lumen with the loss because of different design of reflectors and fixtures.