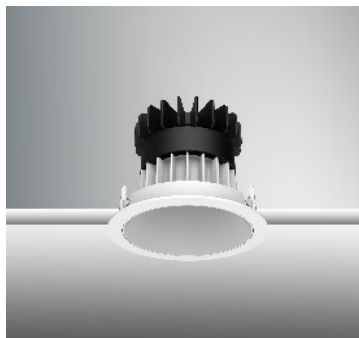


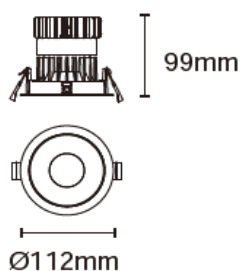


EPIC-110-RTF

Product specification



INTERIOR RECESSED DOWNLIGHTS



100

Technical Specification

Article number	2018.187-LEE-15		
LED Consumption	17W		
Fixture Consumption	20W		
Current / Voltage	500mA / 34Vdc		
CRI	90+		
CCT	2700K	3000K	4000K
LED Lumen ^{*1}	1917lm	2004lm	2120lm
Delivered Lumen	-	1679lm	-
Beam Angle available	20°/30°/45°/55°		

Driver Technical Specification (Remoted)

Driver Brand	-	Driver Model	-
Input voltage / Frequency range	-	Output Current / Voltage	-
Dimming / Flicker	-	Certification	-
Power Factor	-	Warranty	-

Technical character

Materials

Products Standard	IEC 60598-1	Heat sink	Forged aluminum
	IEC 62031	Optics	PMMA Lens
Insulation	CLASS II	Trim	Aluminum die cast
Protection	IP44	Fixture color available	white / black
Tilt / Rotate	Non / Non	Baffle and color available	Aluminum die cast
Operating temperature	0~35°C		white / black / Haze / Gold
Average Failure Time	L70(10k)>55000(h)	Baffle and color available	PC
			Chrome

Accessories

Photometric

SG7-1
Striped glassH7-1
Honeycomb louverDS7-1
Diffusion sheetWG7-1
Woven glassACOT-109
Suction cupACOT-82
MR16 Accessory kitsACOT-83
GU10 Accessory kitsPJ-0079
MR16&GU10 Accessory

Remarks

