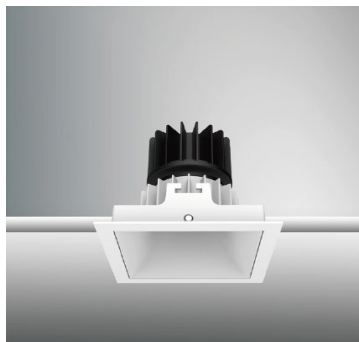




EPIC-110-STF-10

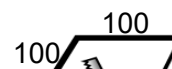
Product specification



INTERIOR RECESSED DOWNLIGHTS



□4.41"
(□112mm)



Technical Specification

Article number	2018.188-ACOT-35
LED Consumption	10W
Fixture Consumption	-
Current / Voltage	800mA / 12Vdc
CRI	90+
CCT	3000K
LED Lumen ^{*1}	784lm
Delivered Lumen	623lm
Beam Angle available	10°

Driver Technical Specification (Remoted)

Driver Brand	-	Driver Model	-
Input voltage / Frequency range	120-240Vac / 50/60Hz	Output Current / Voltage	800mA / -
Dimming / Flicker	-	Certification	-
Power Factor	-	Warranty	-

Technical character

Products Standard	IEC 60598-1
	IEC 62031
Insulation	CLASS II
Protection	IP44
Tilt / Rotate	Non / Non
Operating temperature	0~35°C
Average Failure Time	L70(12k) >72600(h)

Materials

Luminaire	Aluminum die cast
Trim	Aluminum die cast
Optics	PC Lens
Heat sink	Forged aluminum
Fixture color available	white / black
Baffle	Aluminum die cast
Baffle Color available	white / black

Accessories



SG7-1
Striped glass



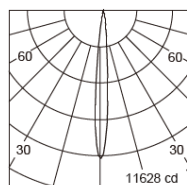
H7-1
Honeycomb louver



DS7-1
Diffusion sheet



WG7-1
Woven glass



h (m)	D (m)	E (lx)
10°		
1.0	0.17	11838
2.0	0.33	2960
3.0	0.50	1315
4.0	0.67	739
5.0	0.83	473



ACOT-109
Suction cup

Remarks



*1. LUMEN : for LED chip test result based on Tc=85°C. This is the ideal (Maximum) lumen. This lumen information is from the LED supplier.