

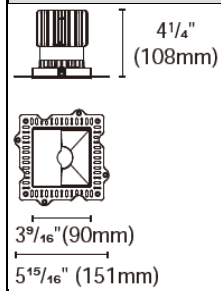


## EPIC-110-STLW



## Product specification

## INTERIOR RECESSED DOWNLIGHTS



Cut out :  
 $3^{30}/_{32}$ " X  $3^{30}/_{32}$ "

## Technical Specification

Article number	2018.278A-ACOT-84-AM	
LED Consumption	24W (NON-IC)	20W (IC)
Fixture Consumption	30W	25W
Current / Voltage	700mA / 33Vdc	600mA / 33Vdc
CRI	90+	90+
CCT	3000K	3000K
LED Lumen <sup>*1</sup>	2987lm	2585lm
Delivered Lumen	1500lm	1172lm
Beam Angle available	30°/40°/50°/60° (Lens)	

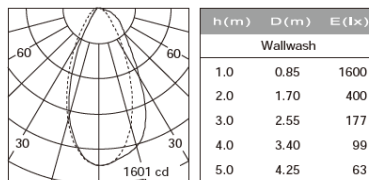
## Driver Technical Specification (Remoted)

Driver Brand	EUCHIPS	Driver Model	PUP40A-1WMC-850
Input voltage / Frequency range	120-277Vac / 50/60Hz	Output Current / Voltage	700mA / 9-42Vdc
Dimming / Flicker	0/1-10V / Free	Certification	UL
Power Factor	>0.9	Warranty	-

Technical character		Materials	
Products Standard	UL1598	Luminaire	Aluminum die cast
		Trim	Aluminum die cast
Insulation	CLASS III	Optics	PMMA Lens
Protection	Wet Location	Heat sink	Forged aluminum
Tilt / Rotate	Non / Non	Fixture color available	white / black
Operating temperature	0~35°C	Baffle	Aluminum die cast
Average Failure Time	L70(10k) >55000(h)	Baffle Color available	white / black

## Accessories

## Photometric



## Remarks



\*1. LUMEN : for LED chip test result based on Tc=85°C. This is the ideal (Maximum) lumen. This lumen information is from the LED supplier.

## INSTALLATION OPTIONS



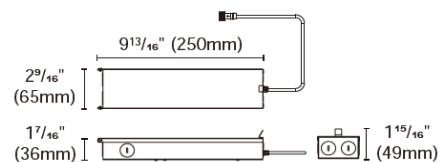
**ACCG-16B-PUP40A-1WMC-850** 0/1-10V

**ACCG-16B-PUP40D-1WMC-850** DALI

**ACCG-16B-PUP40T-1LMC-850** TRIAC

for EPIC110-3.5" (30W)

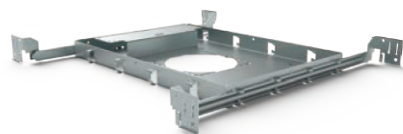
Type: Gear box



\* For single fixture connection only, not available for parallel multiple connection

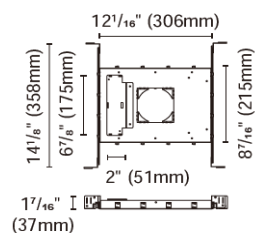
Internal space dimension:

L  $9\frac{13}{16}"$  (250mm) X W  $2\frac{1}{2}"$  (64mm) X H  $1\frac{5}{16}"$  (34mm)



**ACCH-12H-100** for EPIC110-3.5"

Type: New construction plate



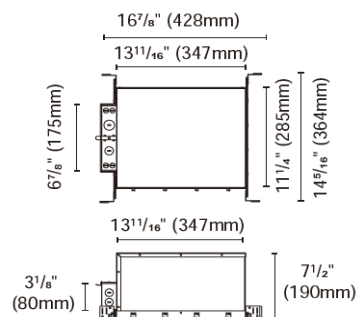
**ACCH-7B-100-PUP40A-1WMC-850** 0/1-10V

**ACCH-7B-100-PUP40D-1WMC-850** DALI

**ACCH-7B-100-PUP40T-1LMC-850** TRIAC

for EPIC110-3.5" (25W)

Type: IC Box



**ACCI-3**

Type: Emergency battery holder

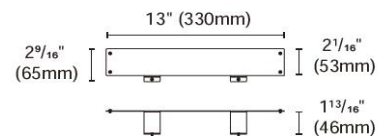
For BillDa emergency led driver-

Model NO. BLD-HM08D-YYY

BLD-HM15D-YYY

BLD-HM20D-YYY

BLD-HM25D-YYY



**ACCI-5**

Type: Remodel stand

