

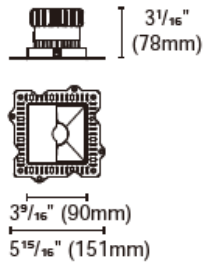


EPIC-110-STW1



Product specification

INTERIOR RECESSED DOWNLIGHTS



Cut out :
 $3^{30}/_{32}$ " X $3^{30}/_{32}$ "

Technical Specification

Article number	2018.278A-LEA-15
LED Consumption	17W
Fixture Consumption	21W
Current / Voltage	500mA / 34Vdc
CRI	90+
CCT	3000K
LED Lumen ^{*1}	2004lm
Delivered Lumen	1097lm
Beam Angle available	Wallwash (Lens)

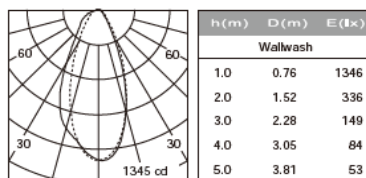
Driver Technical Specification (Remoted)

Driver Brand	EUCHIPS	Driver Model	PUP20A-1WMC
Input voltage / Frequency range	100-240Vac / 50/60Hz	Output Current / Voltage	500mA / 9-40Vdc
Dimming / Flicker	0/1-10V / Free	Certification	UL
Power Factor	>0.9	Warranty	-

Technical character		Materials	
Products Standard	UL1598	Luminaire	Aluminum die cast
		Trim	Aluminum die cast
Insulation	CLASS III	Optics	PMMA Lens
Protection	Wet Location	Heat sink	Forged aluminum
Tilt / Rotate	none / none	Fixture color available	white / black
Operating temperature	0~35°C	Baffle	Aluminum die cast
Average Failure Time	L70(10k) >55000(h)	Baffle Color available	white / black

Accessories

Photometric



Remarks



*1. LUMEN : for LED chip test result based on Tc=85°C. This is the ideal (Maximum) lumen. This lumen information is from the LED supplier.

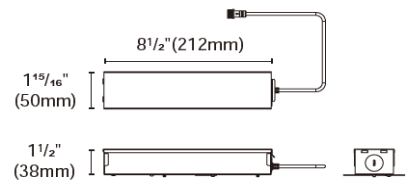
INSTALLATION OPTIONS



ACCG-22B-PUP20A-1WMC 0/1-10V
ACCG-22B-PUP20D-1WMC DALI
ACCG-22B-PUP20T-1LMC TRIAC

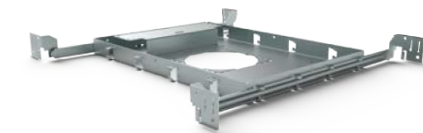
for EPIC110-3.5" (21W)

Type: Gear box



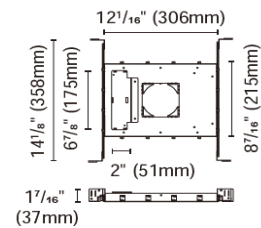
Internal space dimension:

L 8 3/4" (209mm) X W 1 7/8" (48mm) X H 1 5/16" (33mm)



ACCH-12H-100 for EPIC110-3.5"

Type: New construction plate



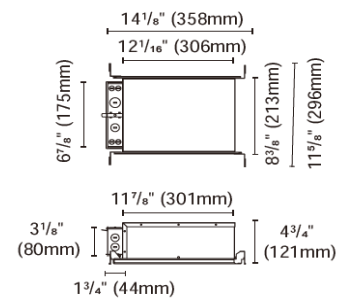
ACCH-12B-100-PUP20A-1WMC 0/1-10V

ACCH-12B-100-PUP20D-1WMC DALI

ACCH-12B-100-PUP20T-1LMC TRIAC

for EPIC110-3.5" (21W)

Type: IC Box



ACCI-3

Type: Emergency battery holder

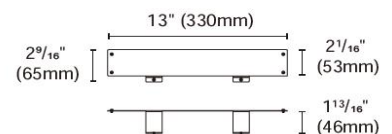
For BillDa emergency led driver-

Model NO. BLD-HM08D-YYY

BLD-HM15D-YYY

BLD-HM20D-YYY

BLD-HM25D-YYY



ACCI-5

Type: Remodel stand

