

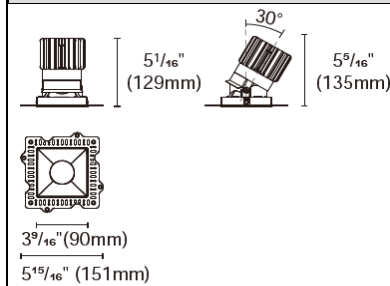


EPIC-110-STLA



Product specification

INTERIOR RECESSED DOWNLIGHTS



Cut out :
3³⁰/₃₂" X 3³⁰/₃₂"

Technical Specification

Article number	2018.295A-ACOT-84-AM	
LED Consumption	24W (NON-IC)	20W (IC)
Fixture Consumption	30W	25W
Current / Voltage	700mA / 33Vdc	600mA / 33Vdc
CRI	90+	90+
CCT	3000K	3000K
LED Lumen *1	2987lm	2585lm
Delivered Lumen	2250lm	1877lm
Beam Angle available	30°/40°/50°/60° (Lens)	

Driver Technical Specification (Remoted)

Driver Brand	EUCHIPS	Driver Model	PUP40A-1WMC-850
Input voltage / Frequency range	120-277Vac / 50/60Hz	Output Current / Voltage	700mA / 9-42Vdc
Dimming / Flicker	0/1-10V / Free	Certification	UL
Power Factor	>0.9	Warranty	-

Technical character		Materials	
Products Standard	UL1598	Luminaire	Aluminum die cast
		Trim	Aluminum die cast
Insulation	CLASS III	Optics	PMMA Lens
Protection	Damp Location	Heat sink	Forged aluminum
Tilt / Rotate	0~30° / None	Fixture color available	white / black
Operating temperature	0~35°C	Baffle	Aluminum die cast
Average Failure Time	L70(10k) >55000(h)	Baffle Color available	white / black

Accessories



SG7-1
Striped glass



H7-1
Honeycomb louver

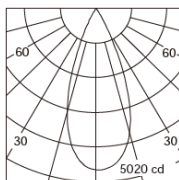


DS7-1
Diffusion sheet



WG7-1
Woven glass

Photometric



h (m)	D (m)	E (lx)
40°		
1.0	0.72	5017
2.0	1.45	1254
3.0	2.17	557
4.0	2.89	313
5.0	3.62	200



ACOT-109
Suction cup

Remarks



*1. LUMEN : for LED chip test result based on Tc=85°C. This is the ideal (Maximum) lumen. This lumen information is from the LED supplier.

INSTALLATION OPTIONS



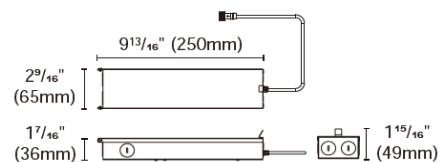
ACCG-16B-PUP40A-1WMC-850 0/1-10V

ACCG-16B-PUP40D-1WMC-850 DALI

ACCG-16B-PUP40T-1LMC-850 TRIAC

for EPIC110-3.5" (30W)

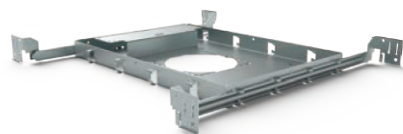
Type: Gear box



* For single fixture connection only, not available for parallel multiple connection

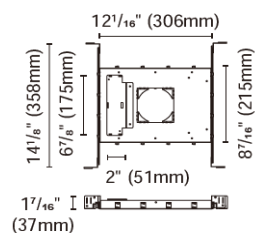
Internal space dimension:

L $9\frac{13}{16}"$ (250mm) X W $2\frac{1}{2}"$ (64mm) X H $1\frac{5}{16}"$ (34mm)



ACCH-12H-100 for EPIC110-3.5"

Type: New construction plate



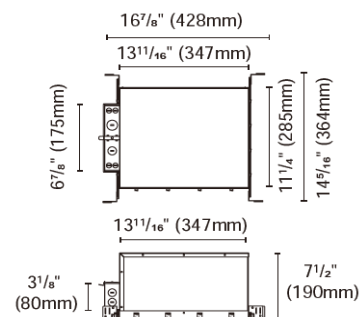
ACCH-7B-100-PUP40A-1WMC-850 0/1-10V

ACCH-7B-100-PUP40D-1WMC-850 DALI

ACCH-7B-100-PUP40T-1LMC-850 TRIAC

for EPIC110-3.5" (25W)

Type: IC Box



ACCI-3

Type: Emergency battery holder

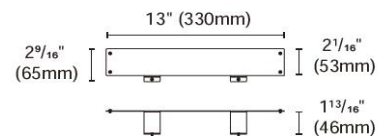
For BillDa emergency led driver-

Model NO. BLD-HM08D-YYY

BLD-HM15D-YYY

BLD-HM20D-YYY

BLD-HM25D-YYY



ACCI-5

Type: Remodel stand

