

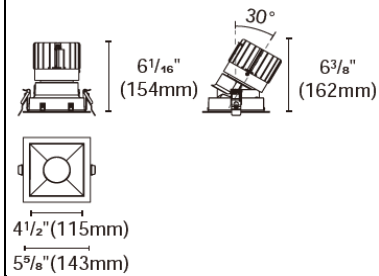


EPIC-135-STA



Product specification

INTERIOR RECESSED DOWNLIGHTS



Cut out :
5 1/32 "X5 1/32 "

Technical Specification

Article number	2018.465-ACOT-73-AM
LED Consumption	36W (NON-IC)
Fixture Consumption	45W
Current / Voltage	1050mA / 34Vdc
CRI	90+
CCT	3000K
LED Lumen *1	4344lm
Delivered Lumen	3242lm
Beam Angle available	20°/30°/45°/55°

Driver Technical Specification (Remoted)

Driver Brand	EUCHIPS	Driver Model	PUP40A-1WMC-1200
Input voltage / Frequency range	100-240Vac / 50/60Hz	Output Current / Voltage	1050mA / 9-38Vdc
Dimming / Flicker	0/1-10V / Free	Certification	UL
Power Factor	>0.9	Warranty	-

Technical character

Products Standard	UL1598	Luminaire	Aluminum die cast
		Trim	Aluminum die cast
Insulation	CLASS II	Optics	PMMA Lens
Protection	Damp Location	Heat sink	Forged aluminum
Tilt / Rotate	0~30° / Non	Fixture color available	white / black
Operating temperature	0~35°C	Baffle	Aluminum die cast
Average Failure Time	L70(10k)55000(h)	Baffle Color available	white / black

Accessories



ACSG-1
Striped glass



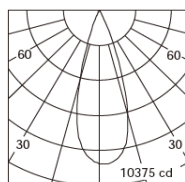
ACHO-2
Honeycomb louver



ACDS-6
Diffusion sheet



ACWG-1
Woven glass



h (m)	D (m)	E (lx)
30°		
1.0	0.59	10355
2.0	1.18	2589
3.0	1.77	1151
4.0	2.36	647
5.0	2.95	414



ACOT-109
Suction cup

Remarks



*1. LUMEN : for LED chip test result based on Tc=85°C. This is the ideal (Maximum) lumen. This lumen information is from the LED supplier.



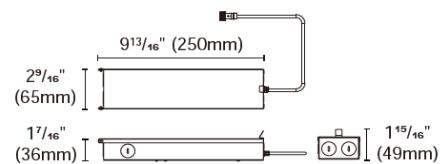
ACCG-16B-PUP40A-1WMC-1200 0/1-10V

ACCG-16B-PUP40D-1WMC-1200 DALI

ACCG-16B-PUP40T-1LMC-1200 TRIAC

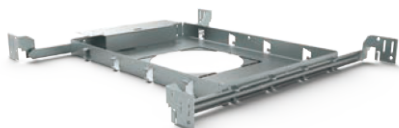
for EPIC135-4.5"

Type: Gear box



Internal space dimension:
L $9\frac{13}{16}"$ (250mm) X W $2\frac{1}{2}"$ (64mm) X H $1\frac{5}{16}"$ (34mm)

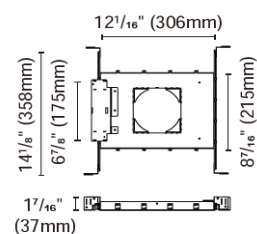
* For single fixture connection only, not available for parallel multiple connection



ACCH-12H-125

for EPIC135-4.5"

Type: New construction plate



ACCI-5

Type: Remodel stand

