

NANIA SERIES (EU)



NANIA (EU)

The specially designed thin trim, and low glare modules, make less existence of the fixture to the area.

Easy change module from the front for more convenience during installation.

Suitable for residential and shop applications.

Material: Aluminum forging heatsink , aluminum die casting trim.

Shape



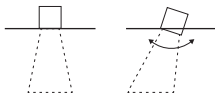
Round
100

Mountings



Recessed Trim Recessed Trimless

Light distributions



Downlight Adjustable



ACOT-35
6° Ultra narrow beam
10W Heatsink



ACOT-36
14W Heatsink



ACOT-35-WCW
Tunable White
9W Heatsink



ACOT-35-DW
Dim to warm
12W Heatsink



ACOT-37
18W Heatsink



5ZZB
GU10
IP20



5ZZA
MR16
IP20

Exchangeable light engine
CRI 90
2700 or 3000 or 4000 Kelvin

Lens

For ACOT-36 or ACOT-37
ACOT-76-15R
ACOT-76-24R
ACOT-76-36R
ACOT-76-50R

For ACOT-35-WCW or ACOT35-DW
ACOE-1 (13R)
ACOE-3 (31R)

Material

Aluminum die cast



GA-TRF
Fixed



GA-TRA
Adjustable

Accessories

SG7-1 Striped glass
WG7-1 Woven glass
DS7-1 Diffusion sheet
H7-1 Honeycomb louver



Round
Trim or Trimless



RT-NA-1



RTL-NA-1

NANIA (EU)

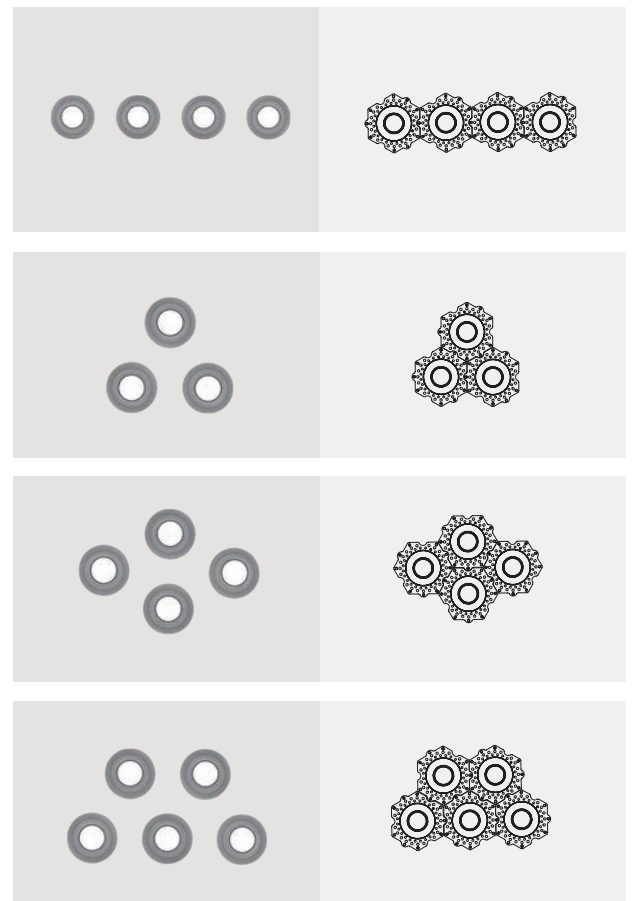


Exchangeable light engine

RISE's range of luminaires offers the unique feature of interchangeable light engines. The modular construction of light engines, drivers, and additional accessories ensures that luminaires upgrade in the future.

The light engine itself is a combination of LEDs, light control, thermal management and intelligent electronics, allowing the whole unit to be changed in the future for a simple upgrade.

Trimless combinations



Easy installation

Designed in tool-free and the use of one same light engine, this series allows the lighting fixture can be easily changed.







NANIA-100-RTF

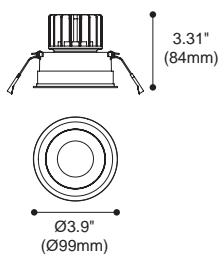


Article number	2118.575-ACOT-35
LED Consumption	10W
Current	800 (mA)
Lumen	774 (lm)
Beam Angle	6° (Lens)
CCT	3000K
CRI	90+
Article number	2118.575-ACOT-36
LED Consumption	14W
Current	350 (mA)
Lumen	1193 (lm)
Beam Angle	15°/24°/36°/50° (Lens)
CCT	3000K
CRI	90+

Colours :  
Black White



Dimmable



NANIA-100-RTA

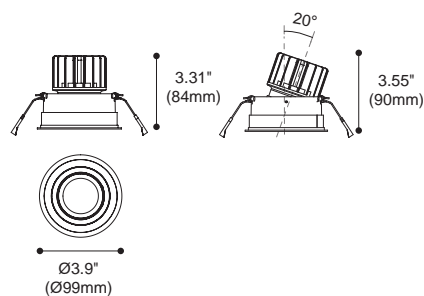


Article number	2118.576-ACOT-35
LED Consumption	10W
Current	800 (mA)
Lumen	774 (lm)
Beam Angle	6° (Lens)
CCT	3000K
CRI	90+
Article number	2118.576-ACOT-36
LED Consumption	14W
Current	350 (mA)
Lumen	1193 (lm)
Beam Angle	15°/24°/36°/50° (Lens)
CCT	3000K
CRI	90+

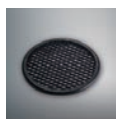
Colours :  
Black White



Dimmable



Accessories

SG7-1
Striped glassH7-1
Honeycomb louverDS7-1
Diffusion sheetWG7-1
Woven glassACOT-82
MR16 Accessory kitsACOT-83
GU10 Accessory kitsPJ-0079
MR16&GU10 Accessory

NANIA-100-RTLF

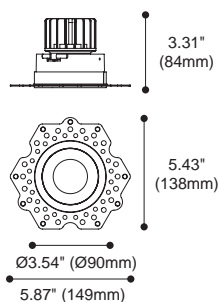


Article number	2118.663-ACOT-35
LED Consumption	10W
Current	800 (mA)
Lumen	774 (lm)
Beam Angle	6° (Lens)
CCT	3000K
CRI	90+
Article number	2118.663-ACOT-36
LED Consumption	14W
Current	350 (mA)
Lumen	1193 (lm)
Beam Angle	15°/24°/36°/50° (Lens)
CCT	3000K
CRI	90+

Colours :  
Black White



Dimmable



NANIA-100-RTLA

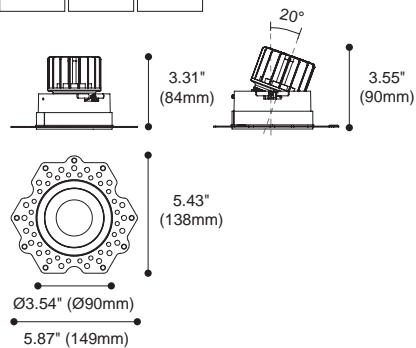


Article number	2118.664-ACOT-35
LED Consumption	10W
Current	800 (mA)
Lumen	774 (lm)
Beam Angle	6° (Lens)
CCT	3000K
CRI	90+
Article number	2118.664-ACOT-36
LED Consumption	14W
Current	350 (mA)
Lumen	1193 (lm)
Beam Angle	15°/24°/36°/50° (Lens)
CCT	3000K
CRI	90+

Colours :  
Black White



Dimmable



Accessories

SG7-1
Striped glassH7-1
Honeycomb louverDS7-1
Diffusion sheetWG7-1
Woven glassACOT-82
MR16 Accessory kitsACOT-83
GU10 Accessory kitsPJ-0079
MR16&GU10 Accessory