

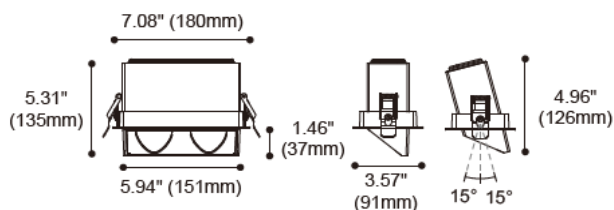


SHELL-D-HC2



Product specification

INTERIOR RECESSED DOWNLIGHTS



Cut out :
3²/₃₂" X 6²⁸/₃₂"

Technical Specification

Article number	2114.429A-AM
LED Consumption	33W
Fixture Consumption	38W
Current / Voltage	900mA / 36.7V
CRI	90+
CCT	3000K
LED Lumen *1	3305lm
Delivered Lumen	2779lm
Beam Angle available	Wallwash (Reflector)

Driver Technical Specification (Remoted)

Driver Brand	EUCHIPS	Driver Model	PUP40A-1WMC-1200
Input voltage / Frequency range	100-240Vac / 50/60Hz	Output Current / Voltage	900mA / 9-42Vdc
Dimming / Flicker	0/1-10V / Free	Certification	UL
Power Factor	>0.9	Warranty	-

Technical character

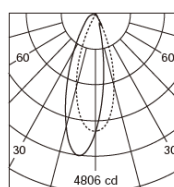
Products Standard	UL1598
Insulation	CLASS I
Protection	Damp Location
Tilt / Rotate	0~15° / None
Operating temperature	0~35°C
Average Failure Time	L70(10k)>55000(h)

Materials

Luminaire	extruded aluminum
Optics	PC Reflector
Heat sink	extruded aluminum
Fixture color available	white / black

Accessories

Photometric



h (m)	D (m)	E (lx)
Wallwash		
1.0	0.53	4695
2.0	1.05	1174
3.0	1.58	521
4.0	2.10	293
5.0	2.63	187

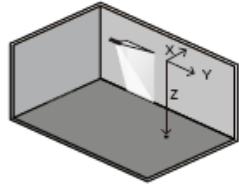
Remarks



*1. LUMEN : for LED chip test result based on Tc=85°C. This is the ideal (Maximum) lumen. This lumen information is from the LED supplier.

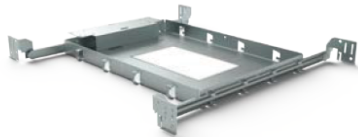
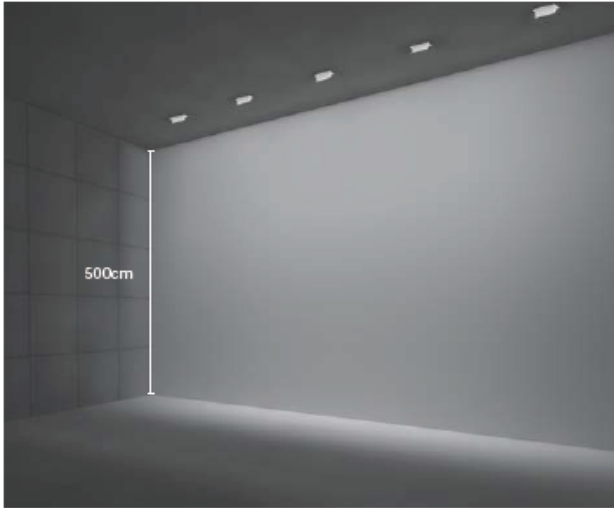
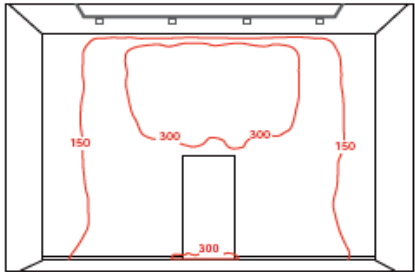
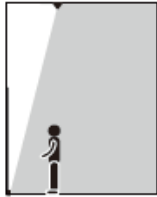
High ceiling wallwash

Suggested height to ceiling: 500cm
Distance between fixtures: 1.20cm
Distance from wall: 100cm

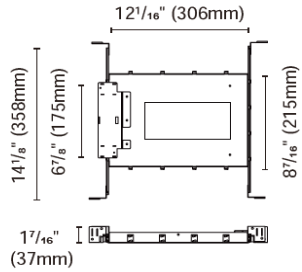


X lamp to wall
Y lamp to lamp
Z lamp to floor

X:Y:Z= 1 : 1.2 : 5 m



ACCH-12H-78X174
for (SHELL-D Recessed)
Type: New construction plate



ACCH-7B-78X174
for (SHELL-D Recessed)
Type: IC Box

