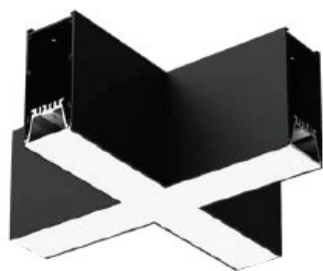




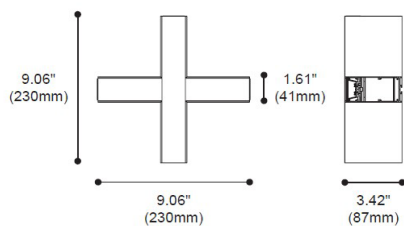
BROWNIE 40-PX Type



Product specification

SYSTEM LIGHTS

X Type



Technical Specification

Article number	2117.418-V
LED Consumption	9W
Fixture Consumption	
Current / Voltage	250mA /36Vdc
CRI	90+
CCT	3000K
LED Lumen ^{*1}	604lm
Delivered Lumen	
Beam Angle available	100°
Driver Technical Specification (Remoted)	
Driver Brand	YG
Driver Model	LBS12W-48-C0250-RD
Input voltage / Frequency range	120-277Vac / 50/60Hz
Output Current / Voltage	250mA / 24-48Vdc
Dimming / Flicker	0/1~10V/Free
Certification	UL/CE
Power Factor	>0.9
Warranty	5years

Technical character		Materials	
Products Standard	IEC 60598-1	Luminaire	extruded aluminum
	IEC 62031	Trim	-
Insulation	CLASS II	Optics	
Protection	IP20	Heat sink	extruded aluminum
Tilt / Rotate		Fixture color available	white / black
Operating temperature	0~35°C	Baffle	PC
Average Failure Time	L70(6k) >36000 (h)	Baffle Color available	

Accessories

Photometric

Remarks



*1. LUMEN : for LED chip test result based on Tc=85°C. This is the ideal (Maximum) lumen. This lumen information is from the LED supplier.