

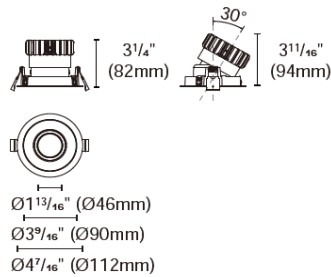


## STELLAR110-RTAS1



## Product specification

## INTERIOR RECESSED DOWNLIGHTS



Cut out :

## Technical Specification

Article number	2118.193-LEA-15		
LED Consumption	17W		
Fixture Consumption	21W		
Current / Voltage	500mA / 34Vdc		
CRI	90+		
CCT	2700K	3000K	4000K
LED Lumen <sup>*1</sup>	1917lm	2004lm	2120lm
Delivered Lumen	-	1517lm	-
Beam Angle available	20°/30°/45°/55° (Lens)		

## Driver Technical Specification (Remoted)

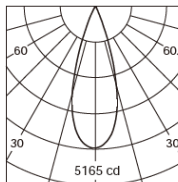
Driver Brand	EUCHIPS	Driver Model	PUP20A-1WMC
Input voltage / Frequency range	100-240Vac / 50/60Hz	Output Current / Voltage	500mA / 9-40Vdc
Dimming / Flicker	0/1-10V / Free	Certification	UL
Power Factor	>0.9	Warranty	-

Technical character		Materials	
Products Standard	UL1598	Luminaire	Aluminum die cast
		Trim	Aluminum die cast
Insulation	CLASS III	Optics	PMMA Lens
Protection	Damp Location	Heat sink	Forged aluminum
Tilt / Rotate	0~30° / 0~355°	Fixture color available	white / black
Operating temperature	0~35°C	Baffle	Aluminum die cast
Average Failure Time	L70(10k) >55000(h)	Baffle Color available	white / black

## Accessories

SG7-1  
Striped glassH7-1  
Honeycomb louverDS7-1  
Diffusion sheetWG7-1  
Woven glass

## Photometric



h (m)	D (m)	E (lx)
30°		
1.0	0.58	5165
2.0	1.16	1291
3.0	1.75	573
4.0	2.33	322
5.0	2.91	206

## Remarks

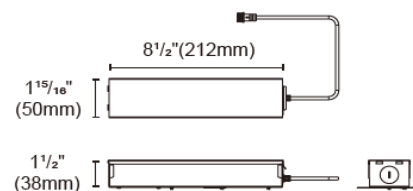


\*1. LUMEN : for LED chip test result based on Tc=85°C. This is the ideal (Maximum) lumen. This lumen information is from the LED supplier.

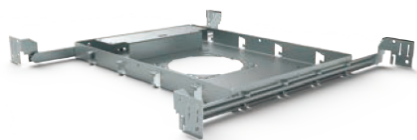
## INSTALLATION OPTIONS



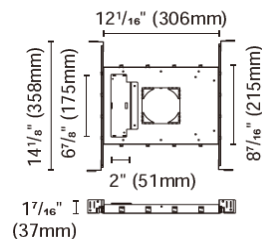
**ACCG-22B-PUP20A-1WMC** 0/1-10V  
**ACCG-22B-PUP20D-1WMC** DALI  
**ACCG-22B-PUP20T-1LMC** TRIAC  
 for STELLAR110-3.5" (20-21W)  
 Type: Gear box



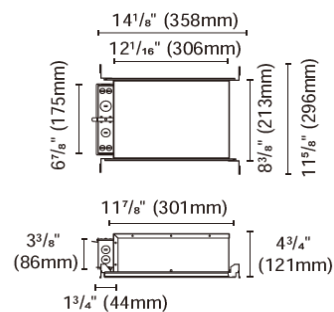
Internal space dimension:  
 L 8 1/4" (209mm) X W 1 7/8" (48mm) X H 1 5/16" (33mm)



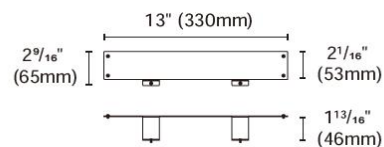
**ACCH-12H-100** for STELLAR110-3.5"  
 Type: New construction plate



**ACCH-12B-100-PUP20A-1WMC** 0/1-10V  
**ACCH-12B-100-PUP20D-1WMC** DALI  
**ACCH-12B-100-PUP20T-1LMC** TRIAC  
 for STELLAR110-3.5" (21W)  
 Type: IC Box



**ACCI-3**  
 Type: Emergency battery holder  
 For BillDa emergency led driver-  
 Model NO. BLD-HM08D-YYY  
 BLD-HM15D-YYY  
 BLD-HM20D-YYY  
 BLD-HM25D-YYY



**ACCI-5**  
 Type: Remodel stand

