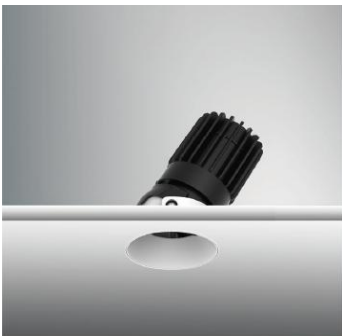


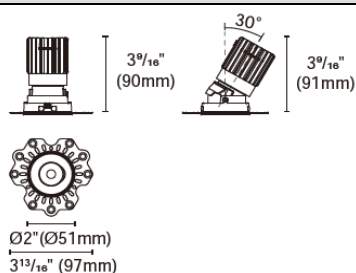


## EPIC-65-RTLA



## Product specification

## INTERIOR RECESSED DOWNLIGHTS



Cut out :  
2<sup>12</sup>/<sub>32</sub> " (60mm)

## Technical Specification

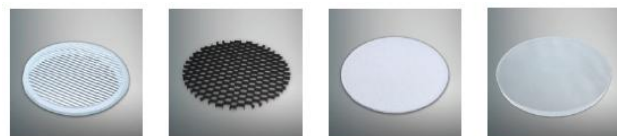
Article number	2118.238F-LEA-13
LED Consumption	9W
Fixture Consumption	12W
Current / Voltage	250mA / 36.5Vdc
CRI	90+
CCT	3000K
LED Lumen *1	913lm
Delivered Lumen	767lm
Beam Angle available	20°/40°/55°

## Driver Technical Specification

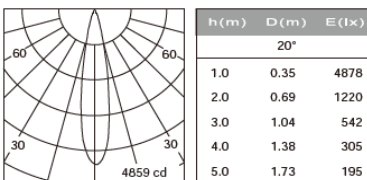
Driver Brand	EUCHIPS	Driver Model	PUP10T-1LMC-350
Input voltage / Frequency range	120-277Vac / 50/60Hz	Output Current / Voltage	250mA / 9-40Vdc
Dimming / Flicker	Triac / Flicker-free	Certification	UL
Power Factor	>0.9	Warranty	5 years

Technical character		Materials	
Products Standard	UL1598	Luminaire	Aluminum die cast
		Trim	Aluminum die cast
Insulation	CLASS III	Optics	PMMA Lens
Protection	Damp Location	Heat sink	Forged aluminum
Tilt / Rotate	0~30° / Non	Fixture color available	white / black
Operating temperature	0~35°C	Baffle	Aluminum die cast
Average Failure Time	L70(6k) >33300(h)	Baffle Color available	white / black

## Accessories

ACSG-5  
Striped glassACHO-6  
Honeycomb louverACDS-3  
Diffusion sheetACWG-6  
Woven glassACOT-107  
Suction cup

## Photometric



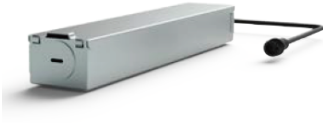
## Remarks



\*1. LUMEN : for LED chip test result based on Tc=85°C. This is the ideal (Maximum) lumen. This lumen information is from the LED supplier.



## INSTALLATION OPTIONS



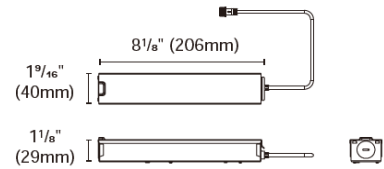
**ACCG-28B-PUP10A-1WMC-350** 0/1-10V

**ACCG-28B-PUP10D-1WMC-350** DALI

**ACCG-28B-PUP10T-1LMC-350** TRIAC

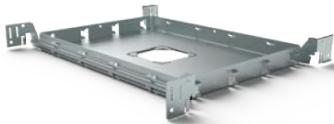
for EPIC65-2"

Type: Gear box



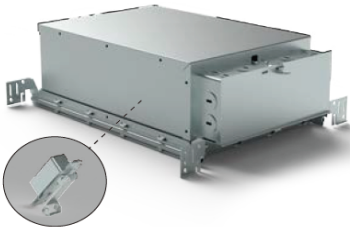
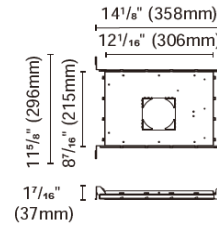
Internal space dimension:

L 4 1/4" (108mm) X W 1 3/8" (35mm) X H 1" (26mm)



**ACCH-12-60** for EPIC65-2"

Type: New construction plate



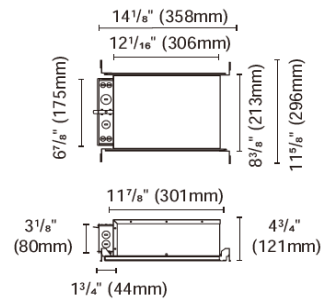
**ACCH-12D-60-PUP10A-1WMC-350** 0/1-10V

**ACCH-12D-60-PUP10D-1WMC-350** DALI

**ACCH-12D-60-PUP10T-1LMC-350** TRIAC

for EPIC65-2"

Type: IC Box



Driver is secured on patent designed bracket



**ACCI-3**

Type: Emergency battery holder

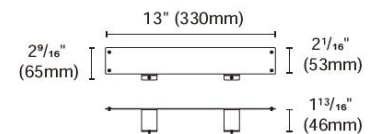
For BillDa emergency led driver-

Model NO. BLD-HM08D-YYY

BLD-HM15D-YYY

BLD-HM20D-YYY

BLD-HM25D-YYY



**ACCI-5**

Type: Remodel stand

