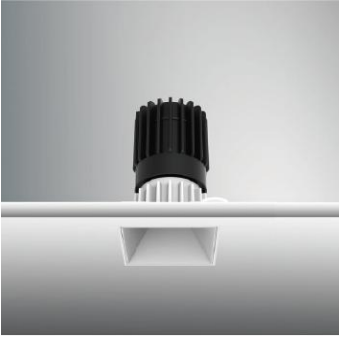


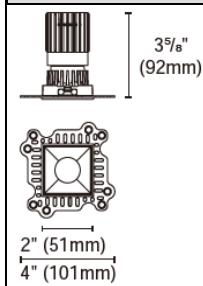


EPIC-65-STLF



Product specification

INTERIOR RECESSED DOWNLIGHTS



Cut out :
2¹²/₃₂" X 2¹²/₃₂"

Technical Specification

Article number	2118.240A-LEA-13
LED Consumption	9W
Fixture Consumption	12W
Current / Voltage	250mA / 36.5Vdc
CRI	90+
CCT	3000K
LED Lumen *1	913lm
Delivered Lumen	796lm
Beam Angle available	20°/40°/55°

Driver Technical Specification

Driver Brand	EUCHIPS	Driver Model	PUP10T-1LMC-350
Input voltage / Frequency range	120-277Vac / 50/60Hz	Output Current / Voltage	250mA / 9-40Vdc
Dimming / Flicker	Triac / Flicker-free	Certification	UL
Power Factor	>0.9	Warranty	5 years

Technical character

Products Standard	UL1598	Luminaire	Aluminum die cast
		Trim	Aluminum die cast
Insulation	CLASS III	Optics	PMMA Lens
Protection	Wet Location	Heat sink	Forged aluminum
Tilt / Rotate	Non / Non	Fixture color available	white / black
Operating temperature	0~35°C	Baffle	Aluminum die cast
Average Failure Time	L70(6k) >33300(h)	Baffle Color available	white / black

Materials

Accessories



ACSG-5
Striped glass



ACHO-6
Honeycomb louver



ACDS-3
Diffusion sheet

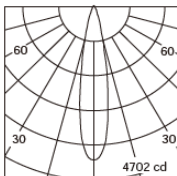


ACWG-6
Woven glass



ACOT-107
Suction cup

Photometric



h (m)	D (m)	E (lx)
20°		
1.0	0.35	4705
2.0	0.70	1176
3.0	1.05	522
4.0	1.39	294
5.0	1.74	188

Remarks



*1. LUMEN : for LED chip test result based on Tc=85°C. This is the ideal (Maximum) lumen. This lumen information is from the LED supplier.



INSTALLATION OPTIONS



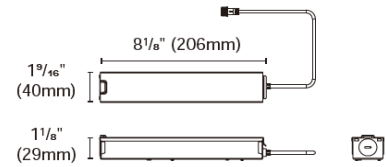
ACCG-28B-PUP10A-1WMC-350 0/1-10V

ACCG-28B-PUP10D-1WMC-350 DALI

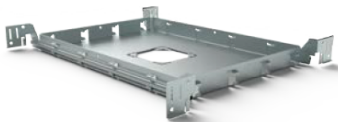
ACCG-28B-PUP10T-1LMC-350 TRIAC

for EPIC65-2"

Type: Gear box

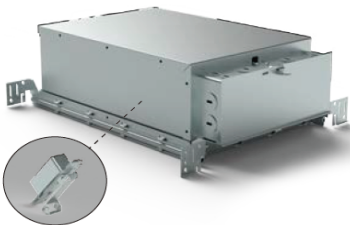
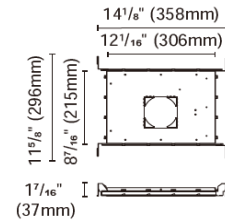


Internal space dimension:
L 4 1/4" (108mm) X W 1 3/8" (35mm) X H 1" (26mm)



ACCH-12-60 for EPIC65-2"

Type: New construction plate



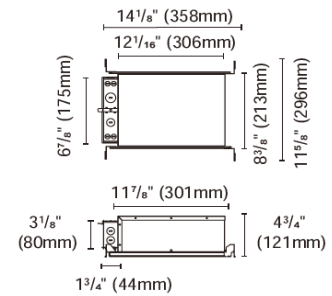
ACCH-12D-60-PUP10A-1WMC-350 0/1-10V

ACCH-12D-60-PUP10D-1WMC-350 DALI

ACCH-12D-60-PUP10T-1LMC-350 TRIAC

for EPIC65-2"

Type: IC Box



Driver is secured on patent designed bracket



ACCI-3

Type: Emergency battery holder

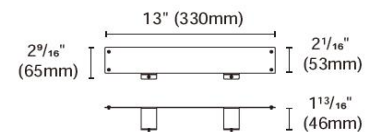
For BillDa emergency led driver-

Model NO. BLD-HM08D-YYY

BLD-HM15D-YYY

BLD-HM20D-YYY

BLD-HM25D-YYY



ACCI-5

Type: Remodel stand

