

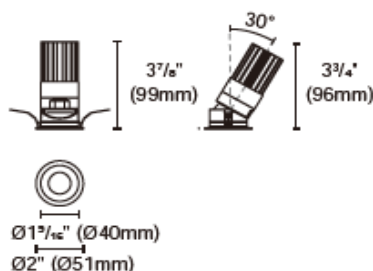


## STAR-50-RTA



## Product specification

## INTERIOR RECESSED DOWNLIGHTS



Cut out :  
1<sup>26</sup>/<sub>32</sub> " (46mm)

## Technical Specification

Article number	2118.565-LEA-09B		
LED Consumption	-		
Fixture Consumption	10W		
Current / Voltage	500mA / 18Vdc		
CRI	90+		
CCT	2700K	3000K	4000K
LED Lumen <sup>*1</sup>	871lm	913lm	981lm
Delivered Lumen	-	654m	-
Beam Angle available	20°/25°/35°/50° (Lens)		

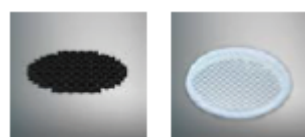
## Driver Technical Specification (Remoted)

Driver Brand	-	Driver Model	-
Input voltage / Frequency range	-	Output Current / Voltage	-
Dimming / Flicker	-	Certification	-
Power Factor	-	Warranty	-

## Technical character

Products Standard	UL2108	Luminaire	Aluminum die cast
		Trim	Aluminum die cast
Insulation	CLASS III	Optics	PMMA Lens
Protection	Damp Location	Heat sink	Forged aluminum
Tilt / Rotate	0~30° / None	Fixture color available	white / black
Operating temperature	0~35°C		
Average Failure Time			

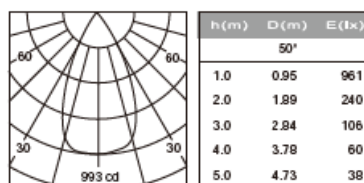
## Accessories



ACHO-18  
honeycomb louver  
+PC sheet

SG-002  
Striped Glass

## Photometric



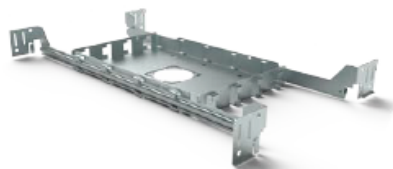
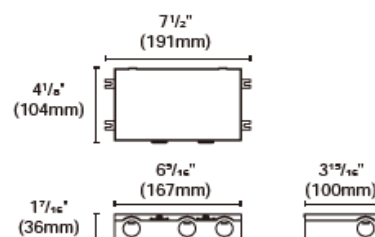
## Remarks



\*1. LUMEN : for LED chip test result based on Tc=85°C. This is the ideal (Maximum) lumen. This lumen information is from the LED supplier.

**KIG-040-DWJ**

Triac/Phase , 0-10V , 1-10V , Potentiometer ,  
10V PWM 5 in 1 dimming  
40W 1~3T  
Type: Gear box

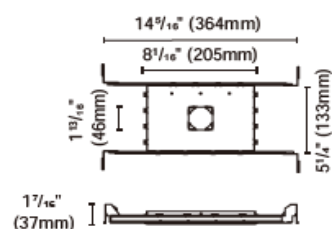
**ACCH-13-R45-S46**

for STAR50 round / square trim  
Type: New construction plate

Cut out:

Round :  $\varnothing 1^{25/32}$ " ( $\varnothing 46$ mm)

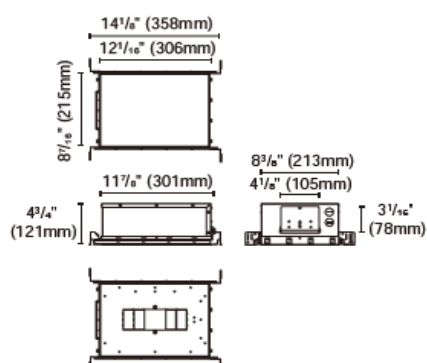
Square :  $\square 1^{25/32}$ " ( $\square 46$ mm)

**ACCH-12G-61X181**

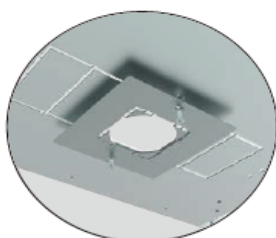
for STAR50 Multiple both trim & trimless  
Type: IC Box

Cut out:

2 T/TL :  $2^{13/32}$ "x $4^{3/4}$ " (61x121mm)



\* Cutout accessories are available for  
different cutout dimensions

**Cutout accessories****ACCI-10-R45-S46**

for STAR50 Trim

Cut out:

Round :  $\varnothing 1^{25/32}$ " ( $\varnothing 46$ mm)

Square :  $\square 1^{25/32}$ " ( $\square 46$ mm)

## Optional driver available



**KIG-040-DW**  
Type: Driver

Triac / 0-10V/1-10V/Potentiometer/10V  
PWM 5 in 1 Dimmable LED driver  
Multi-current output series 40W  
For 1~3T



**PUP10A-1WMC-700**  
Type: Driver

0/1-10V  
Output: 500mA/2-20V/10W  
400mA/2-21V/8.4W  
For 1T



**PUP20A-1WMC**  
Type: Driver

0/1-10V  
Output: 500mA/9-40V/20W  
400mA/9-45V/18W  
For 1~2T



**PUP10T-1LMC-700**  
Type: Driver

Triac  
Output: 500mA/2-20VDC/10W  
400mA/2-21VDC/8.4W  
For 1T



**PUP20T-1LMC**  
Type: Driver

Triac  
Output: 500mA/9-40V/20W  
400mA/9-45V/18W  
For 1~2T



**PUP10D-1WMC-700**  
Type: Driver

Dali  
Output: 500mA/2-20V/10W  
400mA/2-21V/8.4W  
For 1T



**PUP20D-1WMC**  
Type: Driver

Dali  
Output: 500mA/9-40V/20W  
400mA/9-45V/18W  
For 1~2T



**ACOT-106**  
Type: Quick connector