

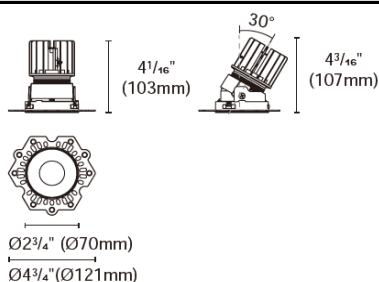


## BRAVO-85-RTLA1



## Product specification

## INTERIOR RECESSED DOWNLIGHTS



Cut out :  
3 5/32" (80mm)

## Technical Specification

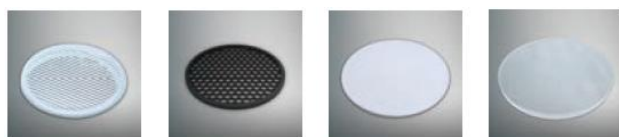
Article number	2118.650F-LEA-01
LED Consumption	8W
Fixture Consumption	-
Current / Voltage	200mA / 35.5Vdc
CRI	90+
CCT	3000K
LED Lumen <sup>*1</sup>	756lm
Delivered Lumen	-
Beam Angle available	15°/24°/36°/50° (Lens)

## Driver Technical Specification

Driver Brand	EUCHIPS	Driver Model	PUP10A-1WMC-350
Input voltage / Frequency range	120-277Vac / 50/60Hz	Output Current / Voltage	200mA / 9-38Vdc
Dimming / Flicker	0/1-10V dim / Free	Certification	CE/UL
Power Factor	>0.9	Warranty	-

Technical character		Materials	
Products Standard	UL1598	Luminaire	Aluminum die cast
		Trim	Aluminum die cast
Insulation	CLASS III	Optics	PMMA Lens
Protection	Damp Location	Heat sink	Forged aluminum
Tilt / Rotate	0~30° / 0~355°	Fixture color available	white / black
Operating temperature	0~35°C	Baffle	Aluminum die cast
Average Failure Time	L70(6k) >33300(h)	Baffle Color available	white / black

## Accessories



SG7-1  
Striped glass

H7-1  
Honeycomb louver

DS7-1  
Diffusion sheet

WG7-1  
Woven glass

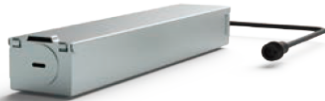
## Photometric

## Remarks

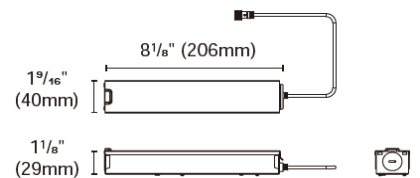


\*1. LUMEN : for LED chip test result based on Tc=85°C. This is the ideal (Maximum) lumen. This lumen information is from the LED supplier.

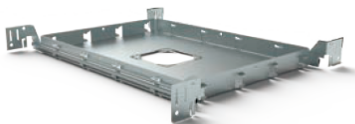
## INSTALLATION OPTIONS



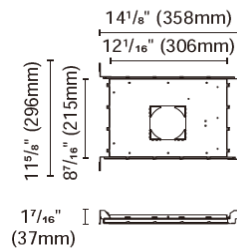
**ACCG-28B-PUP10A-1WMC-350** 0/1-10V  
**ACCG-28B-PUP10D-1WMC-350** DALI  
**ACCG-28B-PUP10T-1LMC-350** TRIAC  
 for BRAVO-2.8" round / square (8W)  
 Type: Gear box



Internal space dimension:  
 L 4 1/4" (108mm) X W 1 3/8" (35mm) X H 1" (26mm)



**ACCH-12-80**  
 for BRAVO-2.8" round / square (8W/20W)  
 Type: New construction plate



**ACCI-5**  
 Type: Remodel stand

