

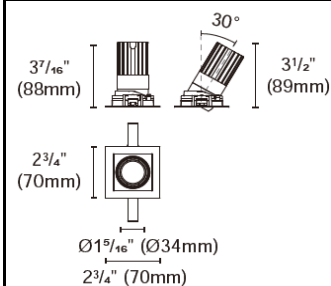


STARLUX-EYE-STA



Product specification

INTERIOR COMBO LIGHTS



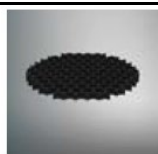
Cut out :
2¹³/₃₂" X 2¹³/₃₂"

Technical Specification

Article number	2214.412-1-LEA-09B
LED Consumption	10W
Fixture Consumption	10W
Current / Voltage	500mA / 18Vdc
CRI	90+
CCT	3000K
LED Lumen *1	913lm
Delivered Lumen	-
Beam Angle available	15°/24°/36°/50° (Lens)
Driver Technical Specification (Remoted)	
Driver Brand	-
Input voltage / Frequency range	-
Dimming / Flicker	-
Power Factor	-
Driver Model	-
Output Current / Voltage	-
Certification	-
Warranty	-

Technical character		Materials	
Products Standard	UL2108	Luminaire	Aluminum die cast
	-	Trim	Aluminum die cast
Insulation	CLASS III	Optics	PMMA Lens
Protection	Damp Location	Heat sink	Forged aluminum
Tilt / Rotate	0~30° / 0~355°	Fixture color available	white / black
Operating temperature	0~35°C	Baffle	Aluminum die cast
Average Failure Time	-	Baffle Color available	white / black

Accessories



ACHO-18
honeycomb louver
+PC sheet



SG-002
Striped Glass

Photometric

Remarks



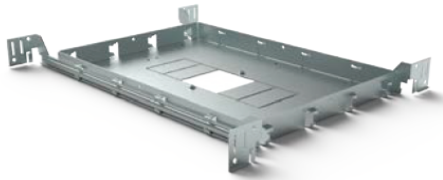
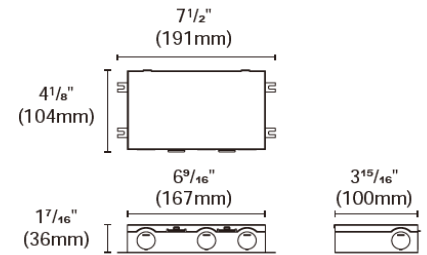
*1. LUMEN : for LED chip test result based on Tc=85°C. This is the ideal (Maximum) lumen. This lumen information is from the LED supplier.

INSTALLATION OPTIONS



KIG-040-DWJ

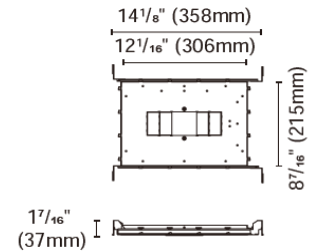
Triac/Phase , 0-10V , 1-10V , Potentiometer ,
10V PWM 5 in 1 dimming
40W , 1-3T
Type: Gear box



ACCH-12-61X181 for Multiple 1T/2T/3T
Type: New construction plate

Cut out:

1T : 2^{13/32}"x2^{13/32}" (61x61mm)
2T : 2^{13/32}"x4^{3/4}" (61x121mm)
3T : 2^{13/32}"x7^{1/8}" (61x181mm)



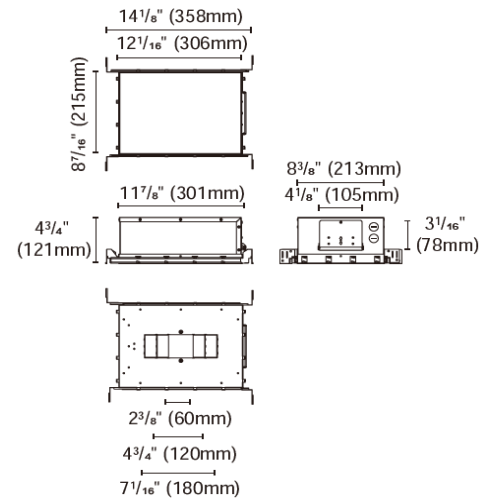
* Cutout accessories are available for different cutout dimensions



ACCH-12G-61X181 for Multiple 1T/2T
Type: IC Box

Cut out:

1T : 2^{13/32}"x2^{13/32}" (61x61mm)
2T : 2^{13/32}"x4^{3/4}" (61x121mm)



* Cutout accessories are available for different cutout dimensions

Optional driver available



KIG-040-DW
Type: Drive

Triac / 0-10V/1-10V/Potentiometer/10V
PWM 5 in 1 Dimmable LED driver
Multi-current output series 40W
For 1-3T



PUP10A-1WMC-700
Type: Driver

0/1-10V
Output: 500mA/2-20V/10W
400mA/2-21V/8.4W
For 1T



PUP20A-1WMC
Type: Drive

0/1-10V
Output: 500mA/9-40V/20W
400mA/9-45V/18W
For 1-2T



PUP10T-1LMC-700
Type: Driver

Triac
Output: 500mA/2-20VDC/10W
400mA/2-21VDC/8.4W
For 1T



PUP20T-1LMC
Type: Driver

Triac
Output: 500mA/9-40V/20W
400mA/9-45V/18W
For 1-2T



PUP10D-1WMC-700
Type: Driver

Dali
Output: 500mA/2-20V/10W
400mA/2-21V/8.4W
For 1T



PUP20D-1WMC
Type: Driver

Dali
Output: 500mA/9-40V/20W
400mA/9-45V/18W
For 1-2T



ACOT-106
Type: Quick connector