

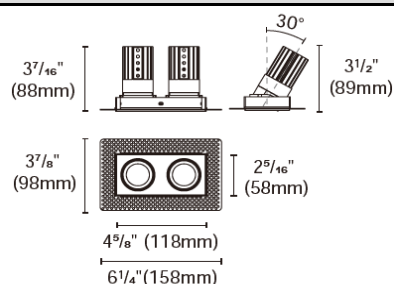


STARLUX-FLAT-2-STLA



Product specification

INTERIOR COMBO LIGHTS



Cut out :

2 13/32" x 4 3/4"

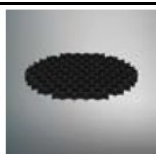
Technical Specification

| | | |
|--|------------------------|----------------------------|
| Article number | 2314.400-2-LEA-09B | |
| LED Consumption | 10W x2 (NON-IC) | 8W x2 (IC) |
| Fixture Consumption | 20W | - |
| Current / Voltage | 500mA / 18Vdc | 400mA / 17.8Vdc |
| CRI | 90+ | 90+ |
| CCT | 3000K | 3000K |
| LED Lumen *1 | 913lm x2 | 756lm x2 |
| Delivered Lumen | - | - |
| Beam Angle available | 15°/24°/36°/50° (Lens) | |
| Driver Technical Specification (Remoted) | | |
| Driver Brand | - | Driver Model - |
| Input voltage / Frequency range | - | Output Current / Voltage - |
| Dimming / Flicker | - | Certification - |
| Power Factor | - | Warranty - |

| Technical character | | Materials | |
|-----------------------|----------------|-------------------------|-------------------|
| Products Standard | UL2108 | Luminaire | Aluminum die cast |
| | - | Trimless | Cold rolled steel |
| Insulation | CLASS III | Optics | PMMA Lens |
| Protection | Damp Location | Heat sink | Forged aluminum |
| Tilt / Rotate | 0~30° / 0~355° | Fixture color available | white / black |
| Operating temperature | 0~35°C | Baffle | Aluminum die cast |
| Average Failure Time | - | Baffle Color available | white / black |

Accessories

Photometric



ACHO-18
honeycomb louver
+PC sheet



SG-002
Striped Glass

Remarks



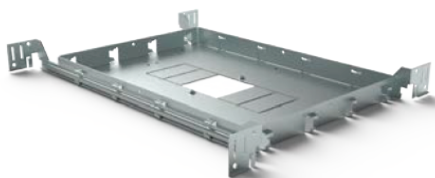
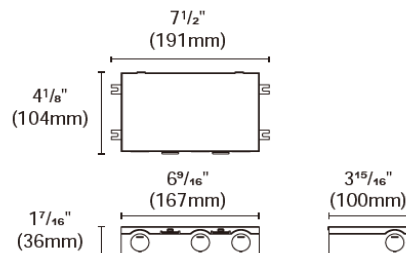
*1. LUMEN : for LED chip test result based on Tc=85°C. This is the ideal (Maximum) lumen. This lumen information is from the LED supplier.

INSTALLATION OPTIONS



KIG-040-DWJ

Triac/Phase, 0-10V, 1-10V, Potentiometer, 10V PWM 5 in 1 dimming
40W, 1-3T
Type: Gear box

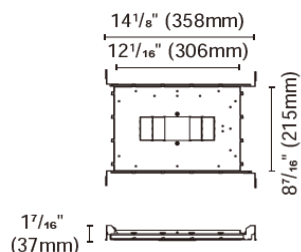


ACCH-12-61X181 for Multiple 1T/2T/3T

Type: New construction plate

Cut out:

1T : 2¹³/₃₂"x2¹³/₃₂" (61x61mm)
2T : 2¹³/₃₂"x4³/₄" (61x121mm)
3T : 2¹³/₃₂"x7¹/₈" (61x181mm)



* Cutout accessories are available for different cutout dimensions

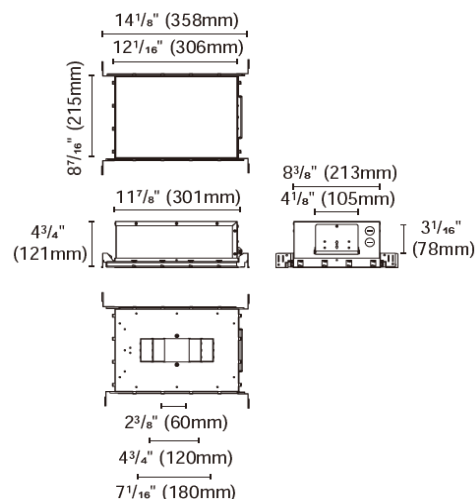


ACCH-12G-61X181 for Multiple 1T/2T

Type: IC Box

Cut out:

1T : 2¹³/₃₂"x2¹³/₃₂" (61x61mm)
2T : 2¹³/₃₂"x4³/₄" (61x121mm)



* Cutout accessories are available for different cutout dimensions

Optional driver available



KIG-040-DW

Type: Drive

Triac / 0-10V/1-10V/Potentiometer/10V PWM 5 in 1 Dimmable LED driver
Multi-current output series 40W
For 1-3T



PUP10A-1WMC-700

Type: Driver

0/1-10V
Output: 500mA/2-20V/10W
400mA/2-21V/8.4W
For 1T



PUP20A-1WMC

Type: Drive

0/1-10V
Output: 500mA/9-40V/20W
400mA/9-45V/18W
For 1-2T



PUP10T-1LMC-700

Type: Driver

Triac
Output: 500mA/2-20VDC/10W
400mA/2-21VDC/8.4W
For 1T



PUP20T-1LMC

Type: Driver

Triac
Output: 500mA/9-40V/20W
400mA/9-45V/18W
For 1-2T



PUP10D-1WMC-700

Type: Driver

Dali
Output: 500mA/2-20V/10W
400mA/2-21V/8.4W
For 1T



PUP20D-1WMC

Type: Driver

Dali
Output: 500mA/9-40V/20W
400mA/9-45V/18W
For 1-2T



ACOT-106

Type: Quick connector