

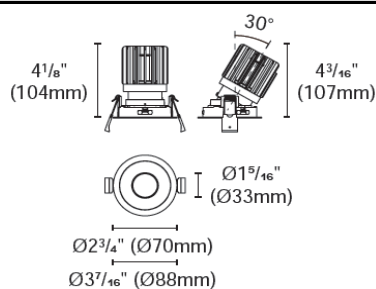


## BRANKO-B-85P-RTA



## Product specification

## INTERIOR RECESSED DOWNLIGHTS



Cut out :  
3 5/32" (80mm)

## Technical Specification

Article number	2318.115-LEA-14	
LED Consumption	16W (NON-IC)	14W (IC)
Fixture Consumption	20W	15W
Current / Voltage	450mA / 33.7Vdc	350mA / 32.9Vdc
CRI	90+	90+
CCT	3000K	3000K
LED Lumen <sup>*1</sup>	1825lm	1454lm
Delivered Lumen	1222lm	1020lm
Beam Angle available	25°/30°/45°/55° (Lens)	

## Driver Technical Specification

Driver Brand	EUCHIPS	Driver Model	PUP20A-1WMC
Input voltage / Frequency range	120-277Vac / 50/60Hz	Output Current / Voltage	450mA / 9-44Vdc
Dimming / Flicker	0/1-10V / Flicker-free	Certification	UL
Power Factor	>0.9	Warranty	-

## Technical character

Products Standard	UL1598
Insulation	CLASS III
Protection	Damp Location
Tilt / Rotate	0~30° / 0~355°
Operating temperature	0~35°C
Average Failure Time	L70(10k) >55000(h)

## Materials

Luminaire	Aluminum die cast
Trim	Aluminum die cast
Optics	PMMA Lens
Heat sink	Forged aluminum
Fixture color available	white / black
Baffle	Aluminum die cast
Baffle Color available	white / black

## Accessories



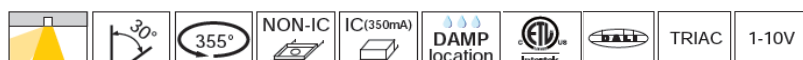
ACHO-5  
Honeycomb louver



S-007  
Snoot

## Photometric

## Remarks

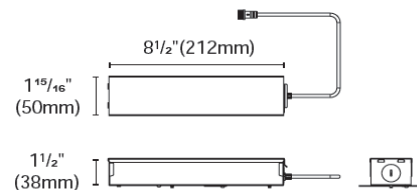


\*1. LUMEN : for LED chip test result based on Tc=85°C. This is the ideal (Maximum) lumen. This lumen information is from the LED supplier.

## INSTALLATION OPTIONS



**ACCG-22B-PUP20A-1WMC** 0/1-10V  
**ACCG-22B-PUP20D-1WMC** DALI  
**ACCG-22B-PUP20T-1LMC** TRIAC  
 for BRANKO85-2.8"  
 BRANKO110-3.5" (18-21W)  
 Type: Gear box

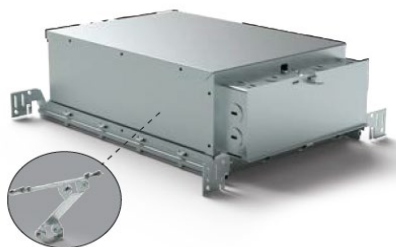
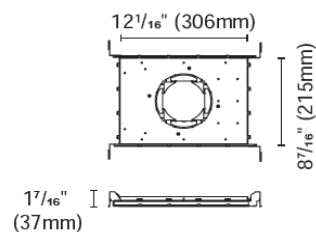


Internal space dimension:  
 L 8 1/4" (209mm) X W 1 7/8" (48mm) X H 1 5/16" (33mm)



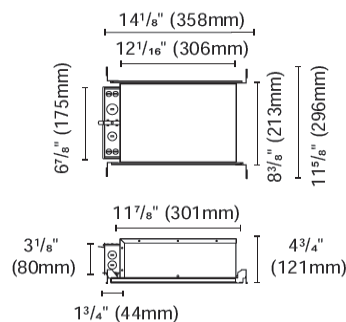
**ACCH-12-80** for BRANKO85-2.8"  
 Type: New construction plate

Cut out:  
 Round :  $\varnothing 3 5/32"$  ( $\varnothing 80\text{mm}$ )  
 Square :  $\square 3 5/32"$  ( $\square 80\text{mm}$ )  
 Also for Millwork

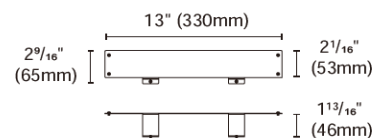


Driver is secured on patent designed bracket

**ACCH-12D-80-PUP20A-1WMC** 0/1-10V  
**ACCH-12D-80-PUP20D-1WMC** DALI  
**ACCH-12D-80-PUP20T-1LMC** TRIAC  
 for BRANKO85-2.8"  
 Type: IC Box  
Cut out:  
 Round :  $\varnothing 3 5/32"$  ( $\varnothing 80\text{mm}$ )  
 Square :  $\square 3 5/32"$  ( $\square 80\text{mm}$ )  
 Also for Millwork



**ACCI-3**  
 Type: Emergency battery holder  
 For BillDa emergency led driver-  
 Model NO. BLD-HM08D-YYY  
 BLD-HM15D-YYY  
 BLD-HM20D-YYY  
 BLD-HM25D-YYY



**ACCI-5**  
 Type: Remodel stand

