

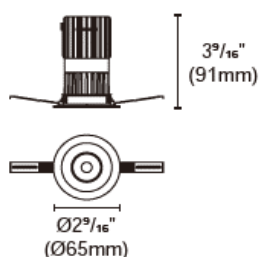


BRANKO-A-65-RTF



Product specification

INTERIOR RECESSED DOWNLIGHTS



Cut out :
2 12/32" (60mm)

Technical Specification

Article number	2318.157-LEA-13		
LED Consumption	10W		
Fixture Consumption	12W		
Current / Voltage	250mA / 36.5Vdc		
CRI	90+		
CCT	2700K	3000K	4000K
LED Lumen ^{*1}	871lm	913lm	981lm
Delivered Lumen	-	-	-
Beam Angle available	15°/24°/36°/50° (Lens)		

Driver Technical Specification (Remoted)

Driver Brand	EUCHIPS	Driver Model	PUP10T-1LMC-350
Input voltage / Frequency range	120-277Vac / 50/60Hz	Output Current / Voltage	250mA / 9-40Vdc
Dimming / Flicker	Triac / Flicker-free	Certification	UL
Power Factor	>0.9	Warranty	5 years

Technical character

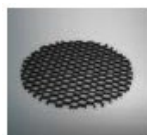
Products Standard	UL1598
Insulation	CLASS III
Protection	Wet Location
Tilt / Rotate	Non / Non
Operating temperature	0~35°C
Average Failure Time	L70(6k) >33300(h)

Materials

Luminaire	Aluminum die cast
Trim	Aluminum die cast
Optics	PMMA Lens
Heat sink	Forged aluminum
Fixture color available	white / black

Accessories

Photometric



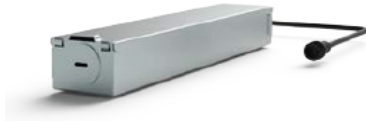
ACHO-6
Honeycomb louver

Remarks

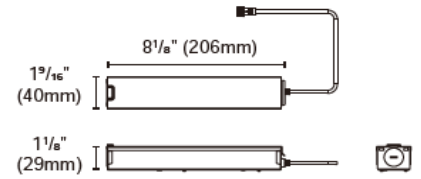


*1. LUMEN : for LED chip test result based on Tc=85°C. This is the ideal (Maximum) lumen. This lumen information is from the LED supplier.

INSTALLATION OPTIONS



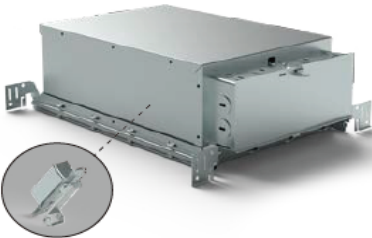
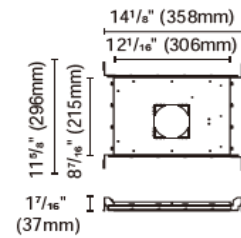
ACCG-28B-PUP10A-1WMC-350 0/1-10V
ACCG-28B-PUP10D-1WMC-350 DALI
ACCG-28B-PUP10T-1LMC-350 TRIAC
 for BRANKO-A-65-2"
 Type: Gear box



Internal space dimension:
 L 4 1/4" (108mm) X W 1 3/8" (35mm) X H 1" (26mm)

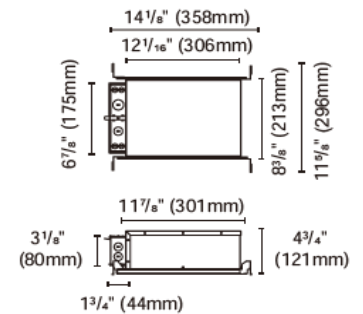


ACCCH-12-60 for BRANKO-A-65-2"
 Type: New construction plate

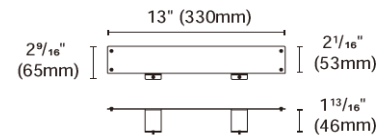


Driver is secured on patent designed bracket

ACCCH-12D-60-PUP10A-1WMC-350 0/1-10V
ACCCH-12D-60-PUP10D-1WMC-350 DALI
ACCCH-12D-60-PUP10T-1LMC-350 TRIAC
 for BRANKO-A-65-2"
 Type: IC Box



ACCI-3
 Type: Emergency battery holder
 For BiilDa emergency led driver-
 Model NO. BLD-HM08D-YYY
 BLD-HM15D-YYY
 BLD-HM20D-YYY
 BLD-HM25D-YYY



ACCI-5
 Type: Remodel stand

