

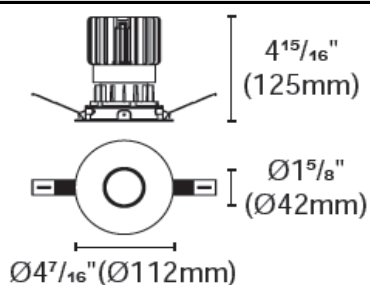


BRANKO-A-110P-RTF

Product specification



INTERIOR RECESSED DOWNLIGHTS



Cut out :
3³⁰/₃₂" (100mm)

Technical Specification

Article number	2318.166-ACOT-84-AM	
LED Consumption	24W (NON-IC)	20W (IC)
Fixture Consumption	30W	25W
Current / Voltage	700mA / 33Vdc	600mA / 33Vdc
CRI	90+	90+
CCT	3000K	3000K
LED Lumen *1	2987lm	2585lm
Delivered Lumen	1803lm	1600lm
Beam Angle available	25°/35°/45°/55° (Lens)	

Driver Technical Specification (Remoted)

Driver Brand	EUCHIPS	Driver Model	PUP40A-1WMC-850
Input voltage / Frequency range	120-277Vac / 50/60Hz	Output Current / Voltage	700mA / 9-42Vdc
Dimming / Flicker	0/1-10V / Free	Certification	UL
Power Factor	>0.9	Warranty	-

Technical character

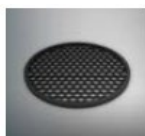
Products Standard	UL1598
Insulation	CLASS III
Protection	Wet Location
Tilt / Rotate	Non / Non
Operating temperature	0~35°C
Average Failure Time	L70(10k) >55000(h)

Materials

Luminaire	Aluminum die cast
Trim	Aluminum die cast
Optics	PMMA Lens
Heat sink	Forged aluminum
Fixture color available	white / black

Accessories

Photometric



H7-1
Honeycomb louver

Remarks



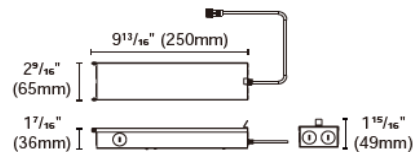
*1. LUMEN : for LED chip test result based on Tc=85°C. This is the ideal (Maximum) lumen. This lumen information is from the LED supplier.

INSTALLATION OPTIONS

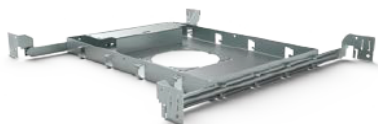


ACCG-16B-PUP40A-1WMC-850 0/1-10V
ACCG-16B-PUP40D-1WMC-850 DALI
ACCG-16B-PUP40T-1LMC-850 TRIAC
 for BRANKO-A-110-3.5" (30W)
 Type: Gear box

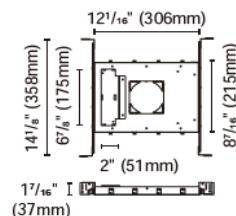
* For single fixture connection only, not available for parallel multiple connection



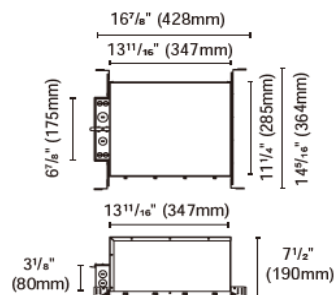
Internal space dimension:
 L 9¹³/₁₆" (250mm) X W 2¹/₂" (64mm) X H 1⁵/₁₆" (34mm)



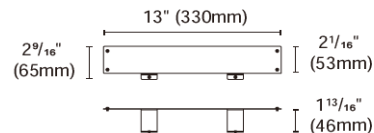
ACCH-12H-100 for BRANKO-A-110-3.5"
 Type: New construction plate



ACCH-7B-100-PUP40A-1WMC-850 0/1-10V
ACCH-7B-100-PUP40D-1WMC-850 DALI
ACCH-7B-100-PUP40T-1LMC-850 TRIAC
 for BRANKO-A-110-3.5" (30W)
 Type: IC Box



ACCI-3
 Type: Emergency battery holder
 For BiLDa emergency led driver-
 Model NO. BLD-HM08D-YYY
 BLD-HM15D-YYY
 BLD-HM20D-YYY
 BLD-HM25D-YYY



ACCI-5
 Type: Remodel stand

