

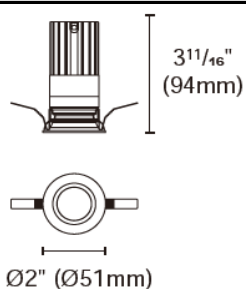


FARFALLA-50-RTLF1



Product specification

INTERIOR RECESSED DOWNLIGHTS



Cut out :
1²⁵/₃₂" (45mm)

Technical Specification

Article number	2318.203-LEA-09B		
LED Consumption	10W		
Fixture Consumption	10W		
Current / Voltage	500mA / 18.3Vdc		
CRI	90+		
CCT	2700K	3000K	4000K
LED Lumen ^{*1}	871lm	913lm	981lm
Delivered Lumen	-	758lm	-
Beam Angle available	20°/25°/40°/50° (Lens)		

Driver Technical Specification (Remoted)

Driver Brand	-	Driver Model	-
Input voltage / Frequency range	-	Output Current / Voltage	-
Dimming / Flicker	-	Certification	-
Power Factor	-	Warranty	-

Technical character

Products Standard	UL2108
Insulation	CLASS III
Protection	Wet Location
Tilt / Rotate	None / None
Operating temperature	0~35°C
Average Failure Time	L70(6k) >33300(h)

Materials

Luminaire	Aluminum
Optics	PMMA Lens
Heat sink	Forged aluminum
Fixture color available	white / black

Accessories

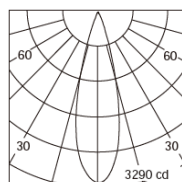


ACHO-18
honeycomb louver
+PC sheet



SG-002
Striped Glass

Photometric



h (m)	D (m)	E (lx)
25°		
1.0	0.49	3291
2.0	0.97	822
3.0	1.46	365
4.0	1.95	205
5.0	2.44	131

Remarks



*1. LUMEN : for LED chip test result based on Tc=85°C. This is the ideal (Maximum) lumen. This lumen information is from the LED supplier.

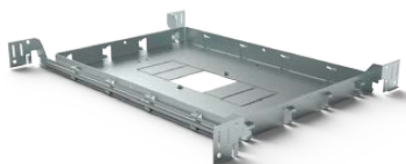
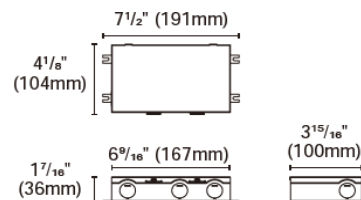


KIG-040-DWJ

Triac/Phase , 0-10V , 1-10V , Potentiometer ,
10V PWM 5 in 1 dimming
40W 1~3T

for FARFALLA 50 (2")

Type: Gear box



* Need to match the cutout accessories

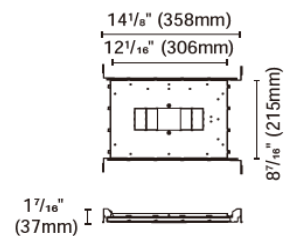
ACCH-12-61X181 +

ACCI-10-R45-R60

Cut out:

Round : 1²⁵/₃₂" (45mm)

Round : 2¹²/₃₂" (60mm)



* Need to match the cutout accessories

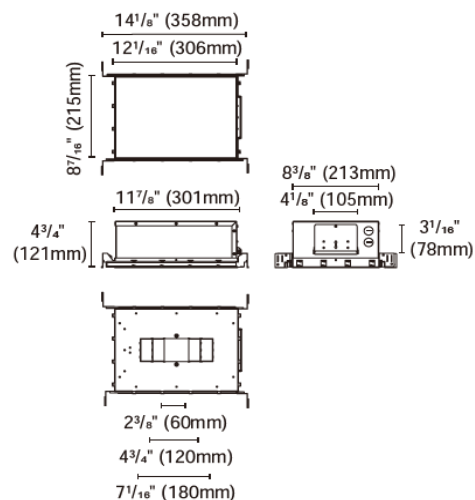
ACCH-12G-61X181 +

ACCI-10-R45-R60

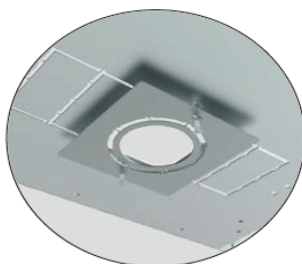
Cut out:

Round : 1²⁵/₃₂" (45mm)

Round : 2¹²/₃₂" (60mm)



Cutout accessories



ACCI-10-R45-R60

Cut out:

Round : 1²⁵/₃₂" (45mm)

Round : 2¹²/₃₂" (60mm)

INSTALLATION OPTIONS

Optional driver available



KIG-040-DW

Type: Drive

Triac / 0-10V/1-10V/Potentiometer/10V
PWM 5 in 1 Dimmable LED driver
Multi-current output series 40W
For FARFALLA 50 (2") 1~3T



PUP10A-1WMC-700

Type: Driver

0/1-10V
Output: 500mA/2-20V/10W
400mA/2-21V/8.4W
For FARFALLA 50 (2") 1T



PUP20A-1WMC

Type: Drive

0/1-10V
Output: 500mA/9-40V/20W
400mA/9-45V/18W
For FARFALLA 50 (2") 1~2T



PUP10T-1LMC-700

Type: Driver

Triac
Output: 500mA/2-20VDC/10W
400mA/2-21VDC/8.4W
For FARFALLA 50 (2") 1T



PUP20T-1LMC

Type: Driver

Triac
Output: 500mA/9-40V/20W
400mA/9-45V/18W
For FARFALLA 50 (2") 1~2T



PUP10D-1WMC-700

Type: Driver

Dali
Output: 500mA/2-20V/10W
400mA/2-21V/8.4W
For FARFALLA 50 (2") 1T



PUP20D-1WMC

Type: Driver

Dali
Output: 500mA/9-40V/20W
400mA/9-45V/18W
For FARFALLA 50 (2") 1~2T



ACOT-106

Type: Quick connector