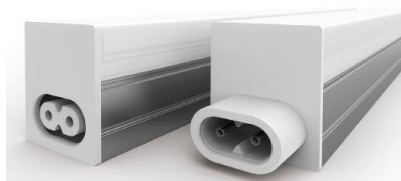




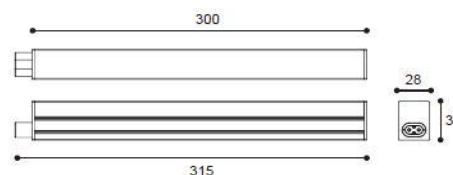
## APOLLO-S-DIMMER-III



## Product specification

**INTERIOR LED LINEAR LIGHT**

Installation	Wall mounted
Cut out	-
Dimension	L=315mm W=28mm H=35mm

**Technical description**

Article number	1510.016	
LED Consumption	7W	
Current	-	
CCT	3000K	4000K
Lumen <sup>*1</sup>	450lm	495lm
Øsystem <sup>*3</sup>	-	-
Voltage	230Vac	
Reflector	110°	
CRI	80+	
Driver	Built-in, I/P : 230VAC 50/60 HZ O/P : 120mA	

**Technical character**

Insulation	CLASS II
Protection	IP 20
Tilt	-
Rotate	-
Operating temperature	-20~40 °C
Average Failure Time	L70(6k) >36000 (h)

**Materials**

Luminaire	aluminum extruded body
	plastic end cap, PC diffuser
Reflector	-
Heat sink	aluminum extruded
Color available	anodized aluminum

**Package**

inner box	mm 1 kg
outer box	mm 0 kg / 0 in 1

**Photometric****Accessories**

None

**Remarks**

\*1. LUMEN : for LED chip test result based on Tc=85°C.

This is the ideal (Maximum) lumen. This lumen information is from the LED supplier

\*3. LUMEN(Øsystem) (Total FLUX) : this lumen is from luminaire with heat sink, reflector and fixture, this is the real lumen with the loss because of different design of reflectors and fixtures.

