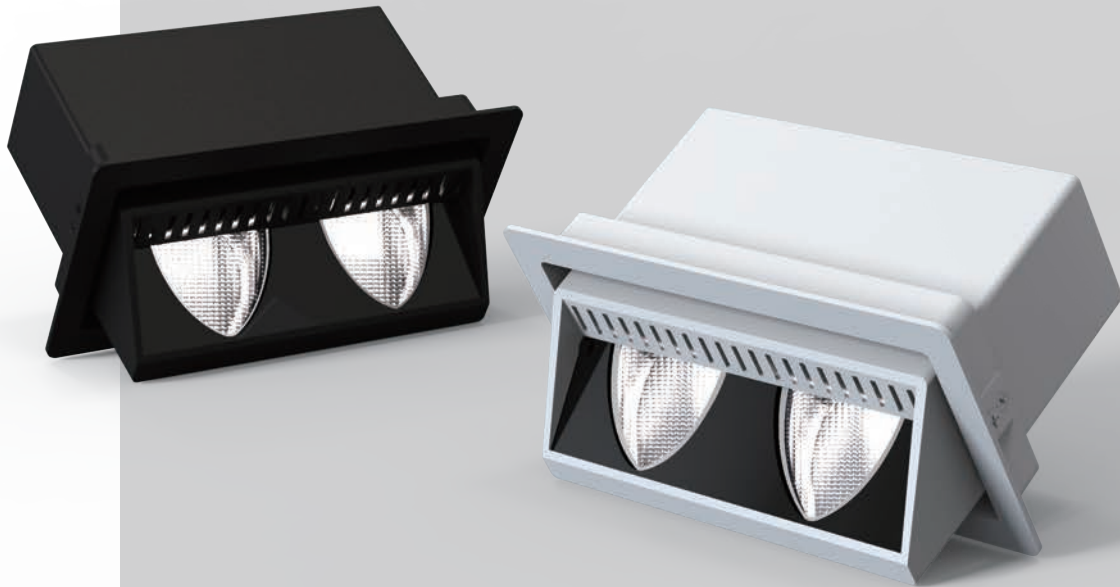


# SHELL SERIES (AM)



# SHELL (AM)

With the ingenious mechanics, optimized thermal management, and multiple free-form surface reflectors, SHELL brings a new picture to display lighting solutions. The wall wash system creates a glowing transition between wall and ceiling, and avoids stripes and shadows across the wall, offering a harmonious visual experience.

Shape



Single-sided  
2T

Mountings



Recessed  
Trim

Light distributions



Wallwash



Floor

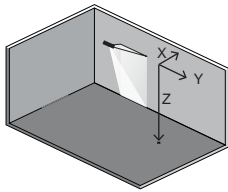


The SHELL light is available in three variants with different beam characteristics to suit different space layouts and requirements. Perfect alignment ensures that as much light as possible is directed at the product with the minimum of luminaries. SHELL lights can be adapted to a variety of conditions and illuminated selectively without loss of light dispersion. As a result, all products are presented in an attractive manner, regardless of the size of the shop or the interior design.



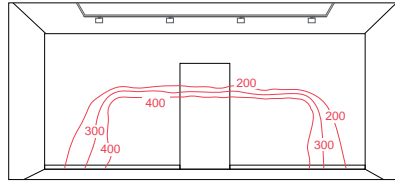
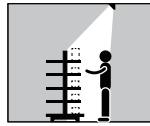
# Shelf floor wallwash

Suggested height to ceiling:300cm  
Distance between fixtures:150cm  
Distance from wall:100cm



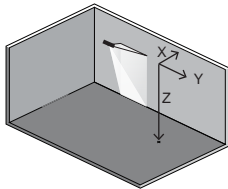
X lamp to wall  
Y lamp to lamp  
Z lamp to floor

X:Y:Z= 1 : 1.5 : 2 m (Low)



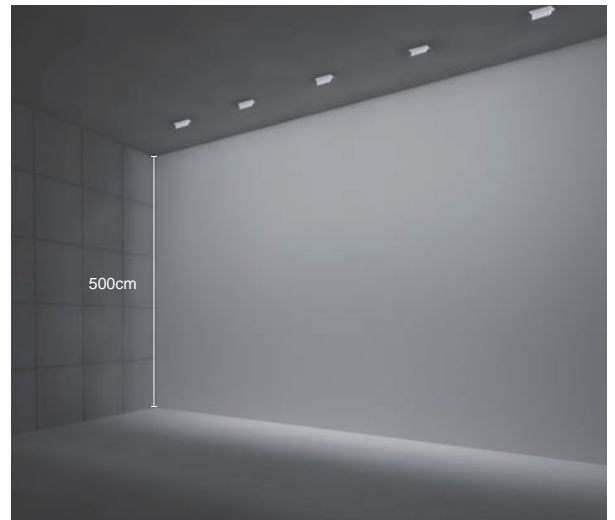
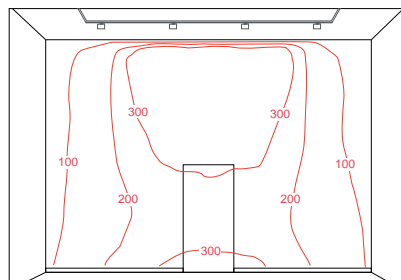
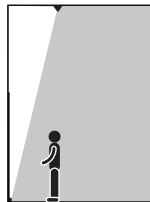
# High ceiling wallwash

Suggested height to ceiling:500cm  
Distance between fixtures:1.20cm  
Distance from wall:100cm



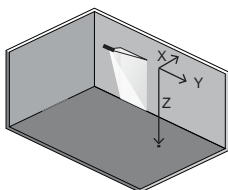
X lamp to wall  
Y lamp to lamp  
Z lamp to floor

X:Y:Z= 1 : 1.2 : 5 m



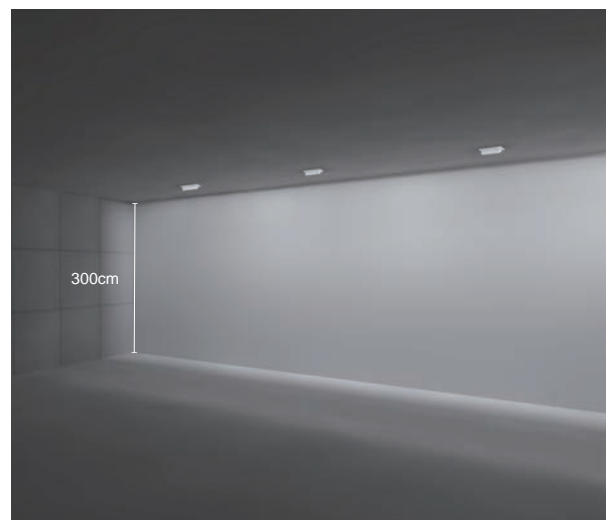
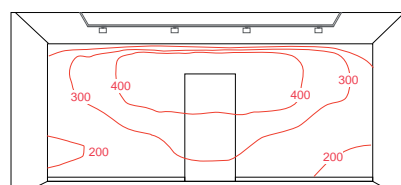
# Wide wallwash

Suggested height to ceiling:300cm  
Distance between fixtures:200cm  
Distance from wall:100cm



X lamp to wall  
Y lamp to lamp  
Z lamp to floor

X:Y:Z= 1 : 2 : 3 m



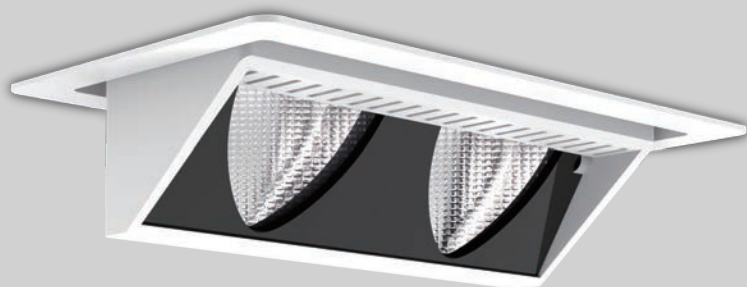






## SHELL-D recessed downlights

wallwash



### Specification

2700 K, 3000 K, 4000 K,

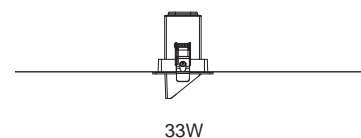
CRI  $\geq$  90

SHELL-D 38W to 2509 lm

(3000 K) 38W to 2779 lm

38W to 2570 lm

### Types



### Colours

Colours :    
Black White

### Beam Angle

		
Shelf floor Wallwash (Reflector)	High ceiling Wallwash (Reflector)	Wide Wallwash (Reflector)







SHELL-D-SF2

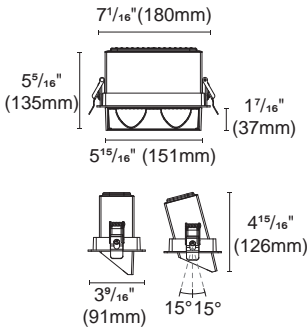


Article number	2114.429-AM
Fixture Consumption	38W
Current	900 (mA)
Delivered lumen	2509 (lm)
Beam Angle	Wallwash (Reflector)
CCT	3000K
CRI	90+
Driver	PUP40A-1WMC-1200

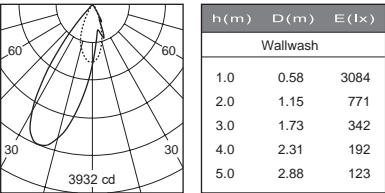
Shelf floor wallwash



Dimmable



Cut out : 3 2/32"X6 28/32" (78X175mm)



SHELL-D-HC2

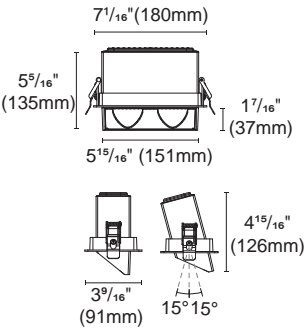


Article number	2114.429A-AM
Fixture Consumption	38W
Current	900 (mA)
Delivered lumen	2779 (lm)
Beam Angle	Wallwash (Reflector)
CCT	3000K
CRI	90+
Driver	PUP40A-1WMC-1200

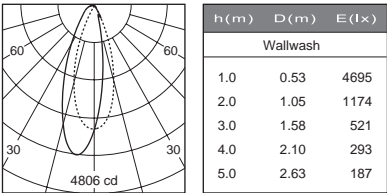
High ceiling wallwash



Dimmable



Cut out : 3 2/32"X6 28/32" (78X175mm)



SHELL-D-W2

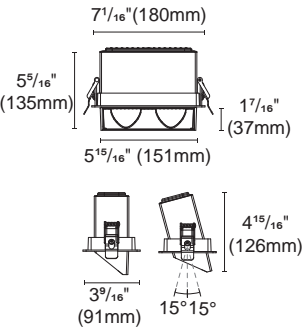


Article number	2114.429B-AM
Fixture Consumption	38W
Current	900 (mA)
Delivered lumen	2570 (lm)
Beam Angle	Wallwash (Reflector)
CCT	3000K
CRI	90+
Driver	PUP40A-1WMC-1200

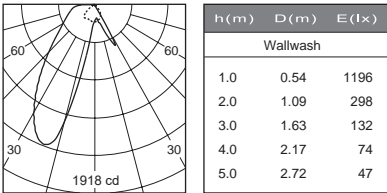
Wide wallwash



Dimmable



Cut out : 3 2/32"X6 28/32" (78X175mm)

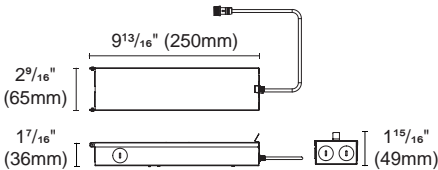




INSTALLATION OPTIONS

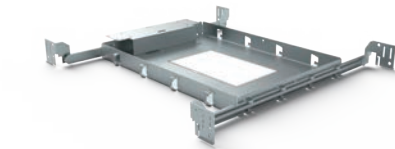


ACCG-16B-PUP40A-1WMC-1200 0/1-10V  
ACCG-16B-PUP40D-1WMC-1200 DALI  
ACCG-16B-PUP40T-1LMC-1200 TRIAC  
Type: Gear box

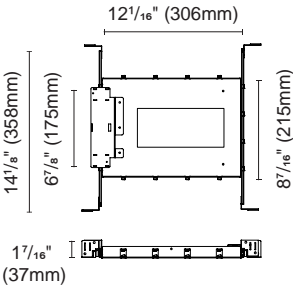


Internal space dimension:  
L 9 13/16" (250mm)X W 2 1/2" (64mm)X H 1 5/16" (34mm)

\* For single fixture connection only, not availalbe for parallel multiple connection



ACCH-12H-78X174  
Type: New construction plate



ACCH-7B-78X174  
Type: IC Box

