

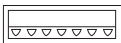
SHELL-S SERIES (AM)



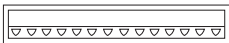
SHELL-S_(AM)

With the ingenious mechanics, optimized thermal management, and multiple free-form surface reflectors, SHELL brings a new picture to display lighting solutions. The wall wash system creates a glowing transition between wall and ceiling, and avoids stripes and shadows across the wall, offering a harmonious visual experience.

Shape



7T



14T



21T

Linear

Mountings



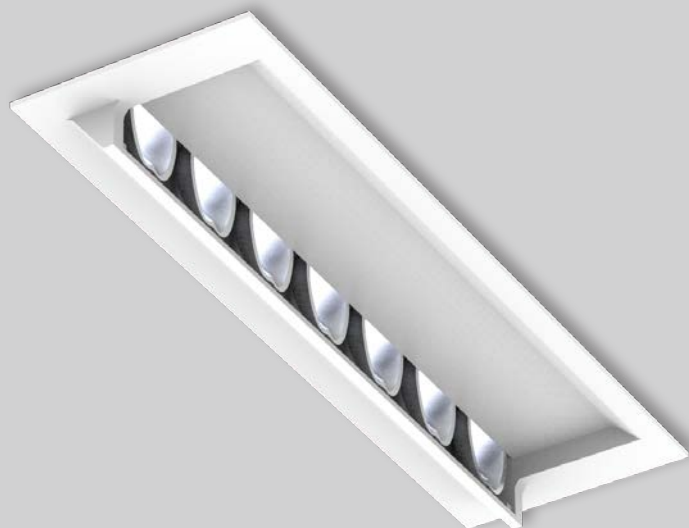
Recessed
Trim

Light distributions



Wallwash

SHELL-S 7T/14T/21T recessed downlights
fixed Wallwash



Specification

2700 K, 3000 K, 4000 K,

CRI \geq 90

SHELL-S 7T to 390 lm

(3000 K) 14T to 760 lm

21T to 1091 lm

1-10V

Types

Recessed

Trim

A 7T

B 14T

C 21T

Colours

Bezel : ☒ Black ☐ White

Beam Angle



Wallwash (Reflector)





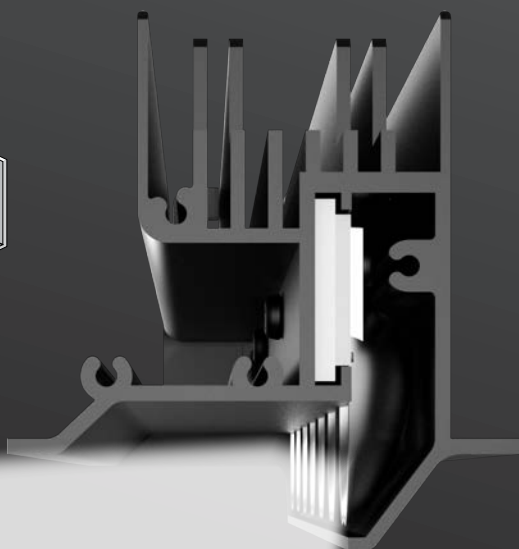
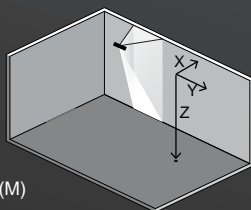
SHELL-S

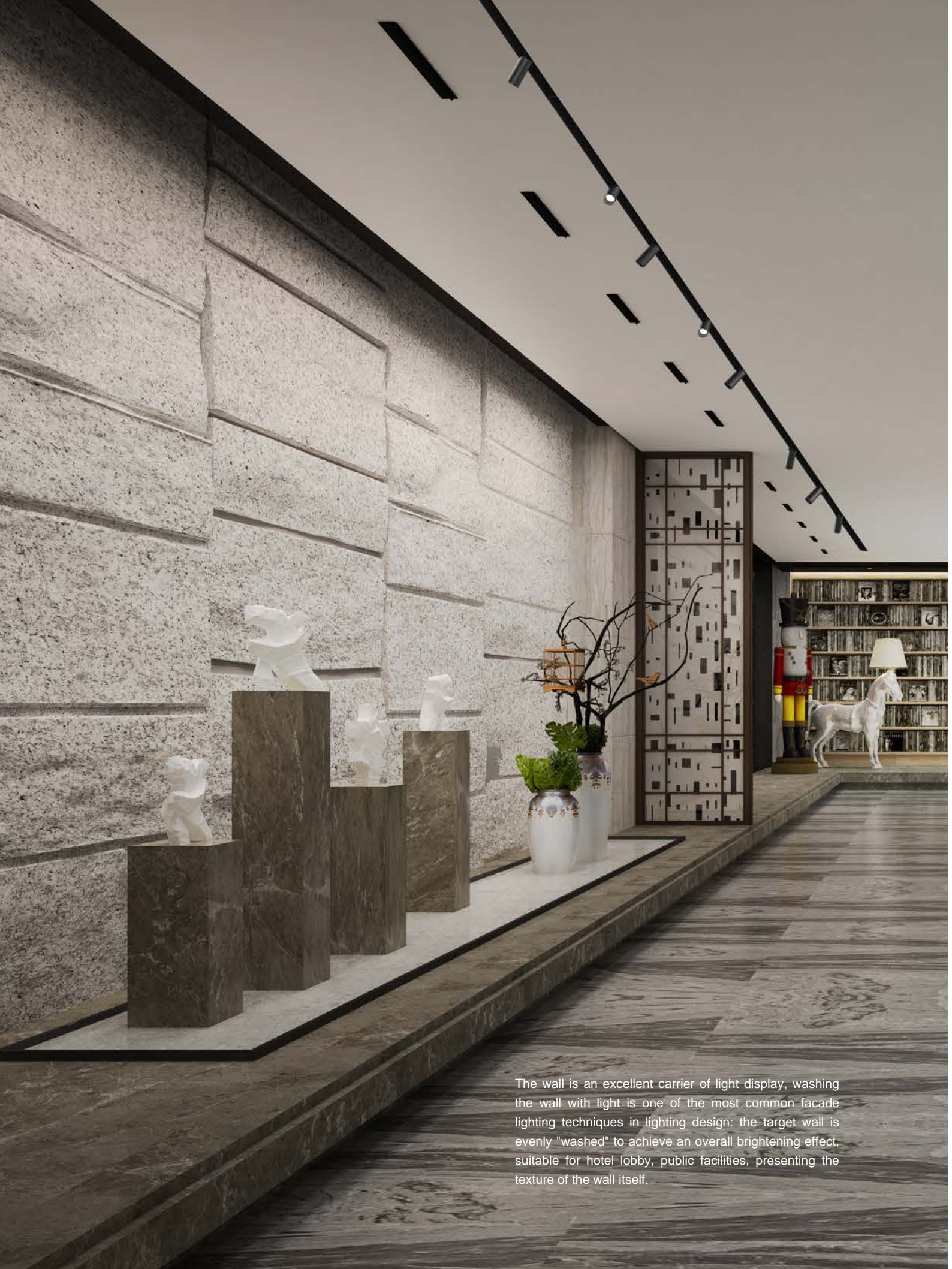
Wallwash

Thanks to asymmetric light distribution and high-performance optical elements, SHELL achieves to ensure the display effect is highlighted can produce a smooth wall gradient from top to bottom. The reflector integrates precise light control, high efficiency low glare and a comfortable visual experience can be precisely created.

X lamp to wall
Y lamp to lamp
Z lamp to floor

$X : Y : Z = 1 : 1 : 2$ (M)





The wall is an excellent carrier of light display, washing the wall with light is one of the most common facade lighting techniques in lighting design: the target wall is evenly "washed" to achieve an overall brightening effect, suitable for hotel lobby, public facilities, presenting the texture of the wall itself.

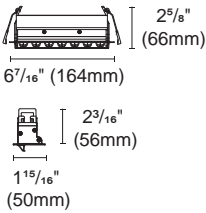
SHELL-S-7-TW



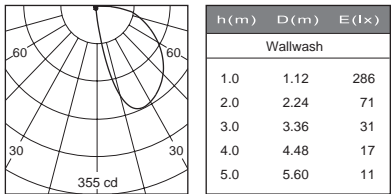
Article number	2114.418A-AM
Fixture Consumption	9W
Voltage	120-277 V
Delivered Lumen	390 (lm)
Beam Angle	Wallwash (Reflector)
CCT	3000K
CRI	90+
Driver Model	LBS12W-48-C0180-RD



Dimmable



Cut out : 1 18/32"X5 31/32" (40X152mm)



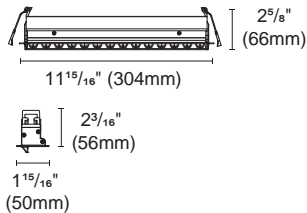
SHELL-S-14-TW



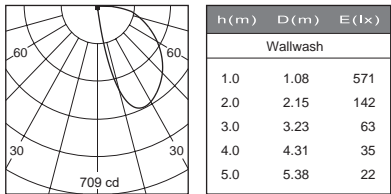
Article number	2114.418B-AM
Fixture Consumption	17W
Voltage	120-277 V
Delivered Lumen	760 (lm)
Beam Angle	Wallwash (Reflector)
CCT	3000K
CRI	90+
Driver Model	PUP20A-1WMC



Dimmable



Cut out : 1 18/32"X11 19/32" (40X292mm)



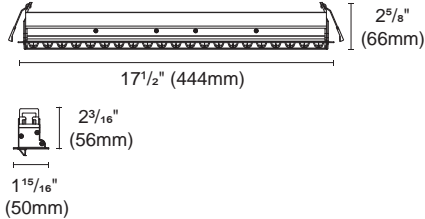
SHELL-S-21-TW



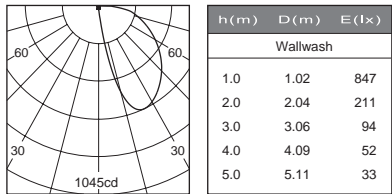
Article number	2114.418C-AM
Fixture Consumption	24W
Voltage	120-277 V
Delivered Lumen	1091 (lm)
Beam Angle	Wallwash (Reflector)
CCT	3000K
CRI	90+
Driver Model	PSB50W-0850-56



Dimmable



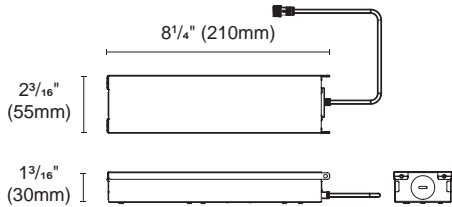
Cut out : 1 18/32"X17" (40X432mm)



INSTALLATION OPTIONS



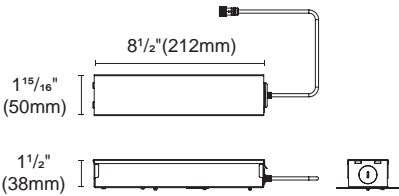
ACCG-20A-LBS12W-48-C0180-RD non dim
For (SHELL-S-7T)
Type: Gear box



Internal space dimension:
L 7 7/8" (200mm)X W 2 1/16" (53mm)X H 1 1/16" (27mm)



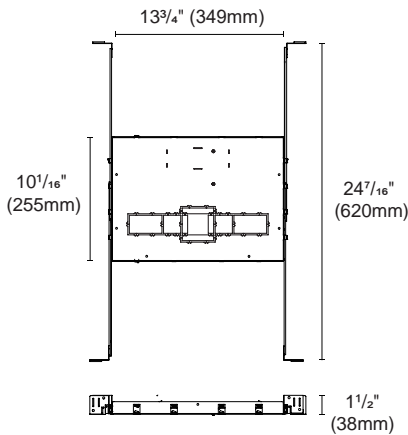
ACCG-22A-PUP20A-1WMC 0/1-10V
For (SHELL-S-14T)
ACCG-22A-PSB50W-0850-56 0/1-10V, TRIAC
For (SHELL-S-21T)
Type: Gear box



Internal space dimension:
L 8 1/4" (209mm)X W 1 7/8" (48mm)X H 1 5/16" (33mm)



ACCG-25-40X148 For (SHELL-S-7T)
Type: New construction plate



ACCH-1-40X428 For (SHELL-S-14T)
(SHELL-S-21T)
Type: New construction plate

